

Seasonal outlook for JJA 2013 conditions over Israel

The Seasonal forecast issued by the Israeli Meteorological Service (IMS) is based on ECMWF system 4 seasonal forecast. Figure 1 presents the probabilities for the 3 temperature terciles over Israel. As JJA is totally dry in Israel, precipitation forecast is not relevant. Therefore, the area to the south of Cyprus should be marked with a D indicating a dry region.

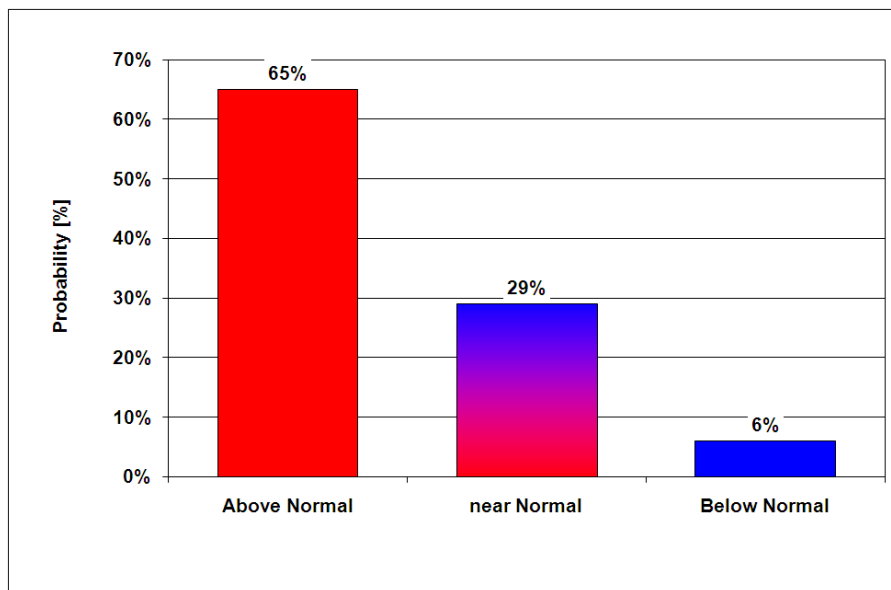


Fig 1: The probability for JJA 2013 terciles over Israel.

Figure 2 presents the ECMWF ensemble median hit score over the SEECOF and MedCOF domain. It can be seen that there is a relatively high positive skill (> 50%) near the Mediterranean, black and Caspian coasts. In the Balkans and to the south of Create the skill is not so promising.

T2m HIT SCORE for summer (JJA) from May model
Based on ERA Interim data (1981-2010)

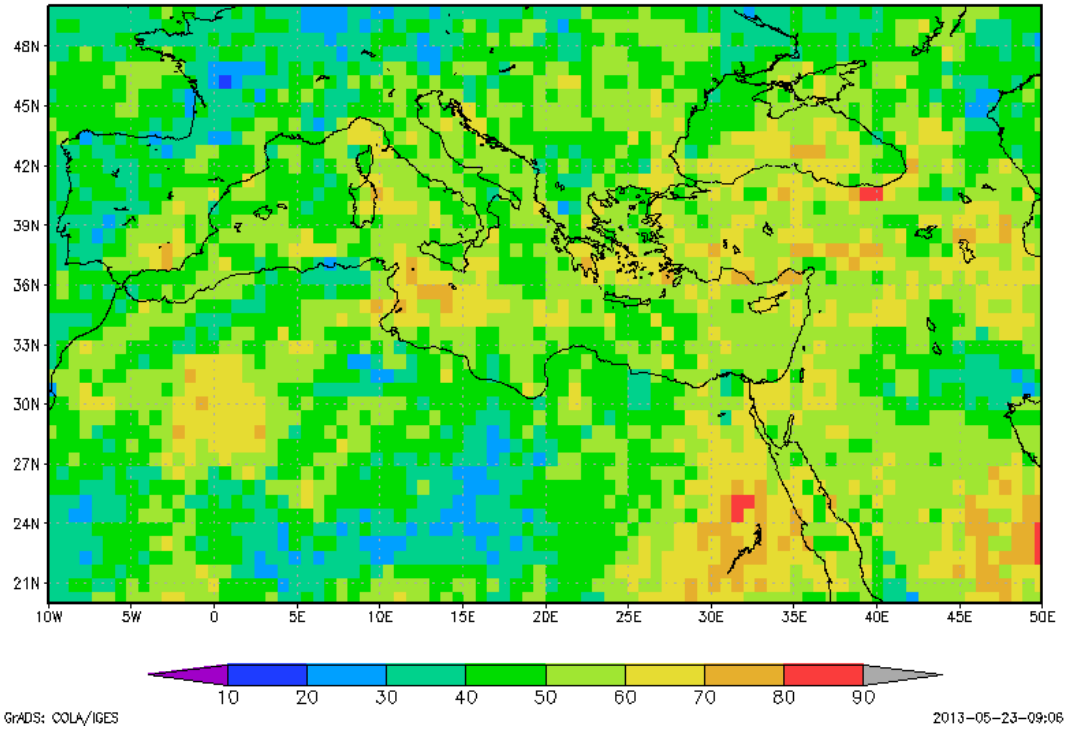


Fig. 2: JJA 2m temperature ECMWF hit score of the ensemble median based on ERA- interim data.