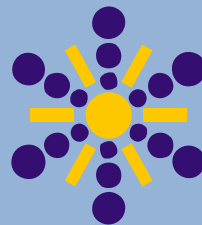


ANALYSIS
of
WINTER
2012 - 2013



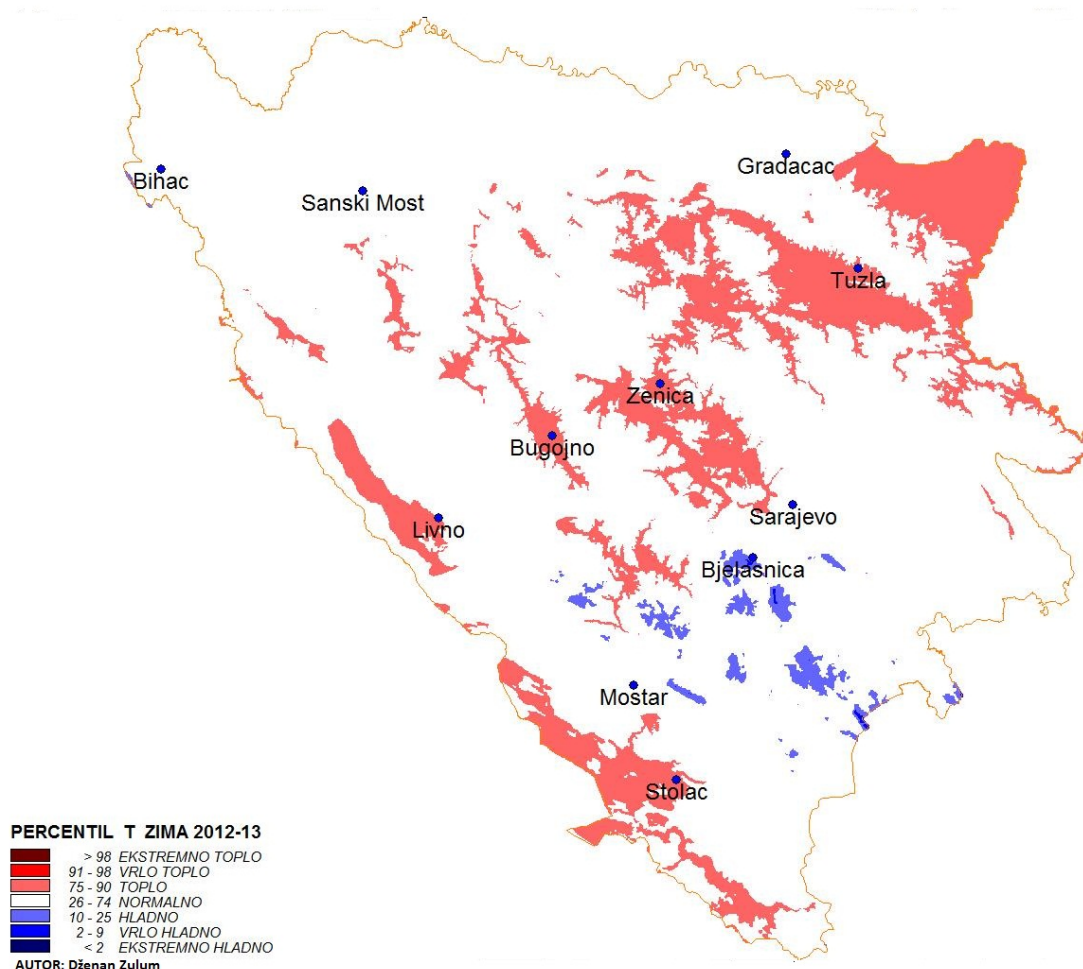
Near MS Ivan Sedlo- janury 2013



<http://fhmzbih.gov.ba>

Mean air temperatures during climatological winter (December 1, 2012. - 28 February 2013.) Ranged from - 6.5 ° C on Bjelasnica to 6.9 oC in Stolac. Temperature departures from normal values relating to the period (1961-1990) were positive in all cells except in Bjelasnica where the average temperature in winter (2012 - 2013) was lower than the average value for the same period. Deviations from the average temperatures ranged from -0.6 ° C on Bjelasnica to 1.7 oC in Bugojno. According to percentile temperature values are classified as a category of normal and warm. December 2012 year most of the observed area was colder than average and deviations ranged from -2.0 ° C on Bjelasnica to 0.5 oC in Bihac. Month of January 2013 was much warmer than the average value relating to the period (1961-1990). Deviations in January ranged from 0.3 ° C to 3.8 ° C to Bjelasnica in Zenica. Mean temperatures in February were slightly higher than in a number of cells, only the Krajina region registered lower values mean monthly temperature averages. Extremely warm month was not recorded during winter 2012-2013.

STATIONS	TEMPERATURE		STANICE	TEMPERATURA	
	ANOMALIES (°C)	percentiles		anomalies (°C)	percentiles
Bihać	0,5	64	Livno	1,1	76
Bjelašnica	-0,6	23	Mostar	0,5	68
Bugojno	1,7	82	Sarajevo	1,2	73
Drvar	1,1	78	Sanski Most	1,1	68
Gradačac	1,1	70	Stolac	1,1	85
Ivan Sedlo	0,4	60	Tuzla	1,4	78
			Zenica	1,6	82



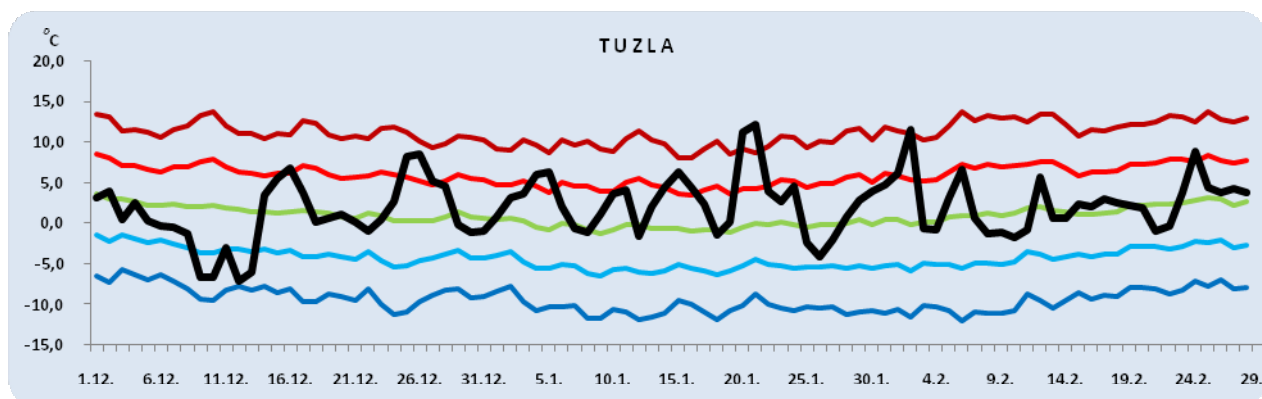
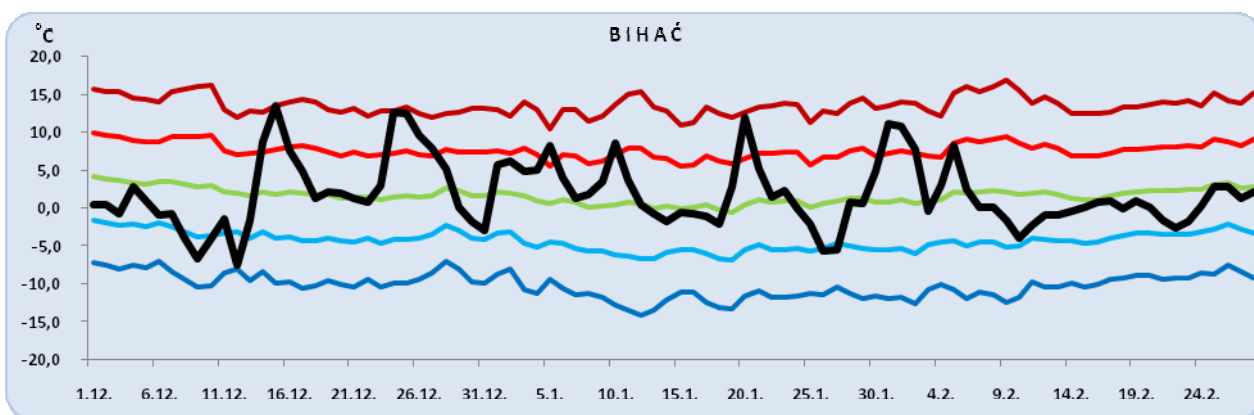
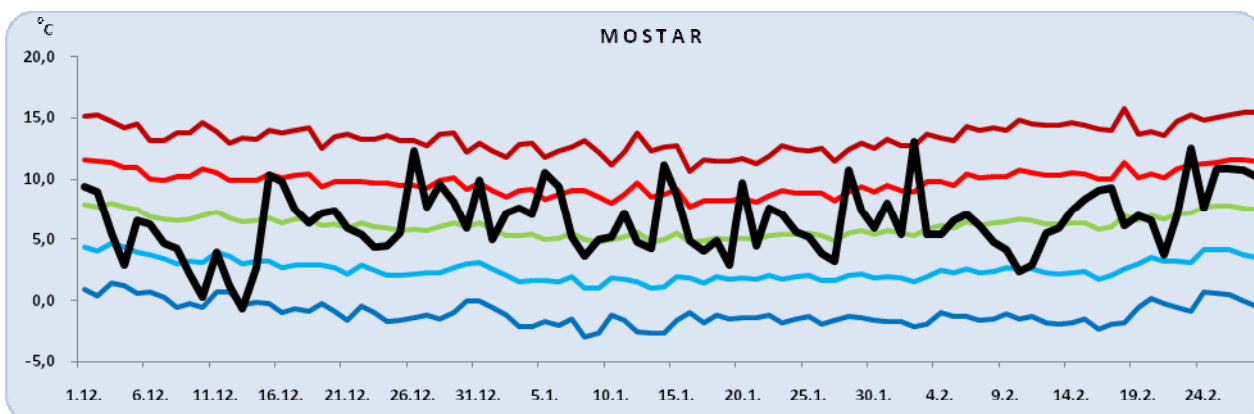
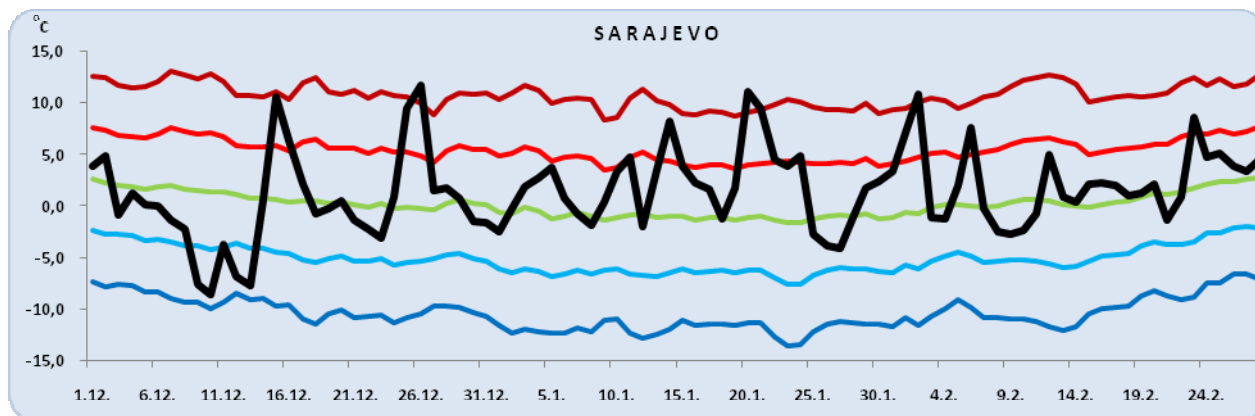
Anomalies of average temperature in this January compared to the average values (1961-1990) were positive. During December the first and second decades were warmer and the third decade was cooler than average. In February the temperature variations depending on the observed area and decades were warmer or cooler than average. Maximum decade-temperature deviations from the average values were recorded during the second week of December and the lowest in the first decade of February.

	decembar			january			february		
Bihać	-3,4	1,5	3,0	4,7	2,0	-0,5	0,3	-2,2	-2,0
Gradačac	-1,8	0,1	1,9	3,5	3,5	2,5	1,1	-0,3	0,4
Livno	-0,9	-0,1	1,4	3,8	3,9	1,0	-0,4	-1,0	3,1
Mostar	-1,5	-0,5	1,1	2,1	1,9	0,7	-0,5	0,3	2,0
Sarajevo	-1,6	0,0	1,5	2,2	5,3	1,4	0,5	0,2	1,9
Tuzla	-1,9	-0,2	2,1	3,9	5,2	1,8	0,8	0,4	1,3

Odstupanja srednjih dekadnih vrijednosti temperatura na šest stanica nalaze se u tabeli.

STANICA	Ekstremely warm days			Ekstremely cold days		
	decembar	january	february	decembar	january	february
Bihać	1	0	0	0	0	0
Bjelašnica	0	0	0	2	0	0
Livno	1	1	0	1	0	0
Mostar	0	0	1	1	0	0
Sarajevo	1	2	1	0	0	0
Sanski Most	1	1	0	0	0	0
Tuzla	0	1	1	0	0	0

Winter 2012-2013

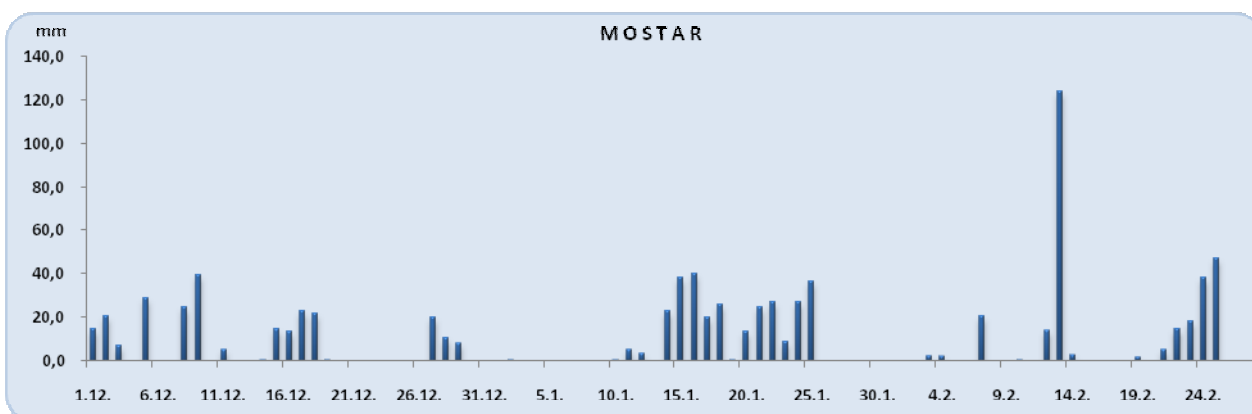
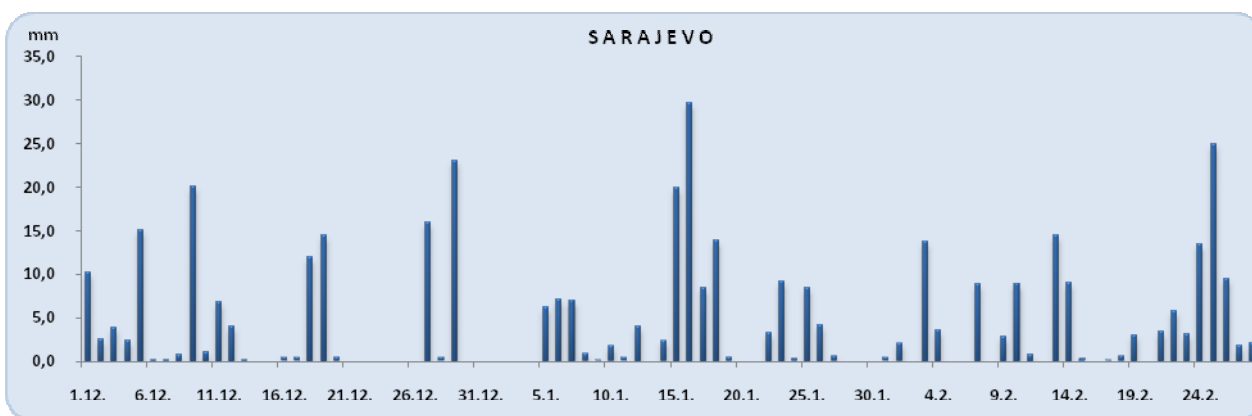


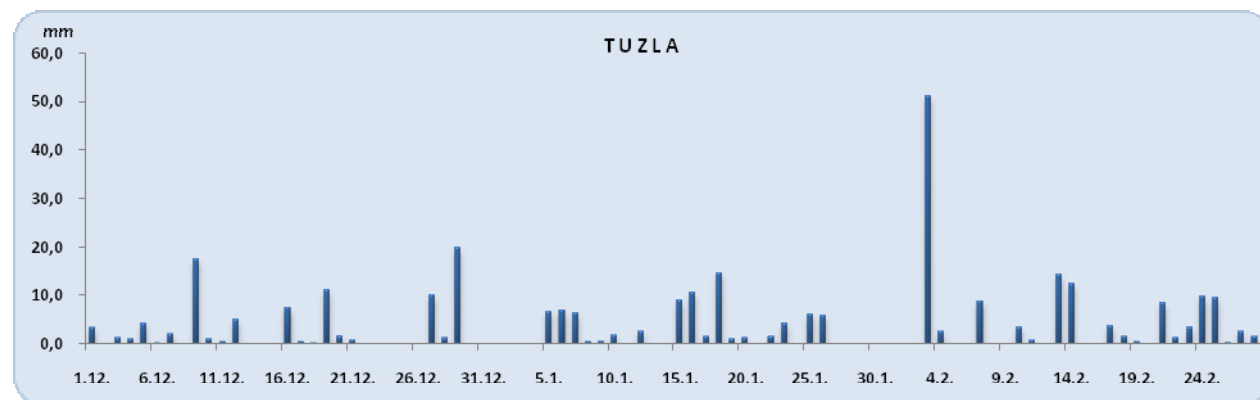
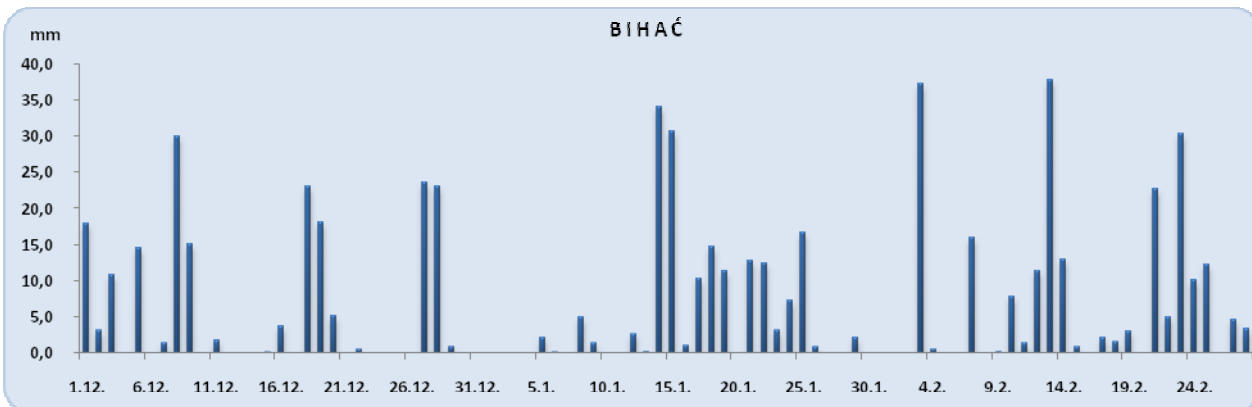
Daily temperatures

STANICE	PRECIPITATION		STANICE	PRECIPITATION	
	anomalies (%) ¹	percentiles		anomalies (%)	percentiles
Bihać	203,4	100	Livno	164,0	93
Bjelašnica	213,6	100	Mostar	168,0	96
Bugojno	142,5	88	Sarajevo	177,2	99
Drvar	179,2	100	Sanski Most	180,0	97
Gradačac	127,2	79	Stolac	194,7	100
Ivan Sedlo	247,6	100	Tuzla	135,9	86
			Zenica	153,7	94

During the winter of 2012-2013. year, total precipitation was above the multi-year average. Total rainfall ranged from 265.0 l/m² in Bugojno to 835.8 / m² in Mostar. Deviation from the average amount of precipitation ranged from 127.2% to 247.6% Gradacac up to Ivan saddle. By percentage precipitations are classified as a category rainy, very wet and extremely wet.

Rainfall during the three months were higher than the average amount. The largest positive anomalies from the average amount of rainfall measured in January.





Dayly precipitation