

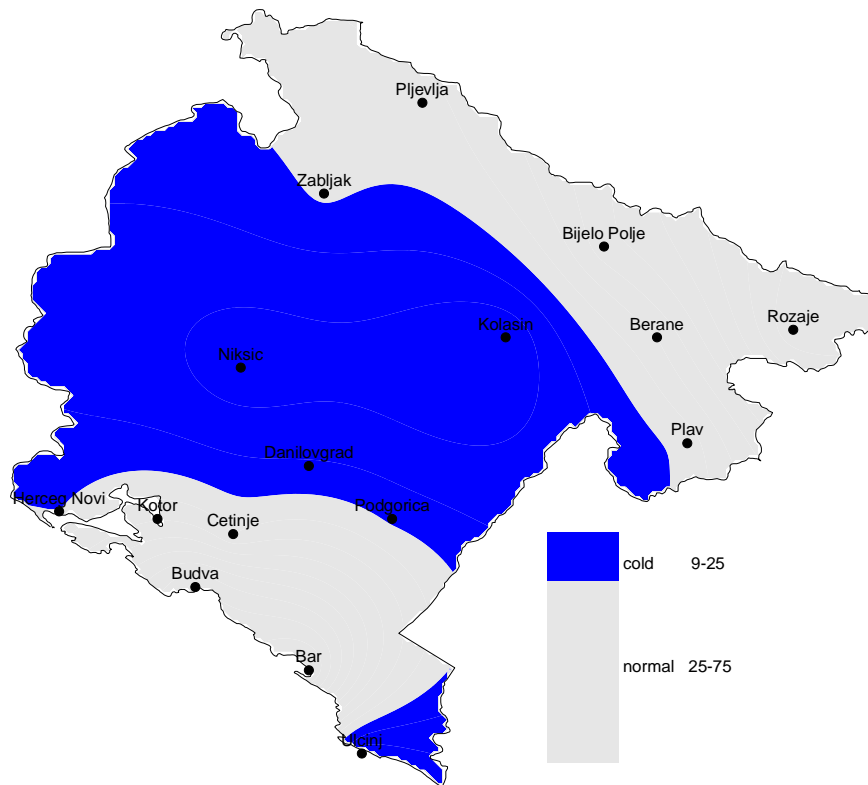


National report on climate for the winter season 2011/2012

- **Main characteristics: according to the percentiles, the temperature was in the category "normal" to "cold"; The amount of precipitation was in the normal range for large part of Montenegro; Maximum heights of snow cover were registered; Due to the exceptional snowfall events, the state of emergency was proclaimed.**

The average temperature was in the range from -4.1°C in Žabljak to 9.6°C in Budva (in Podgorica 5.8°C). The range of temperature anomalies with respect to 1961-1990, was from -1.5°C in Kolašin to 0.6°C in Rožaje. The winter 2011/2012 in Podgorica was 0.7°C colder than normal.

Percentile's distribution of temperature for the winter 2011/2012





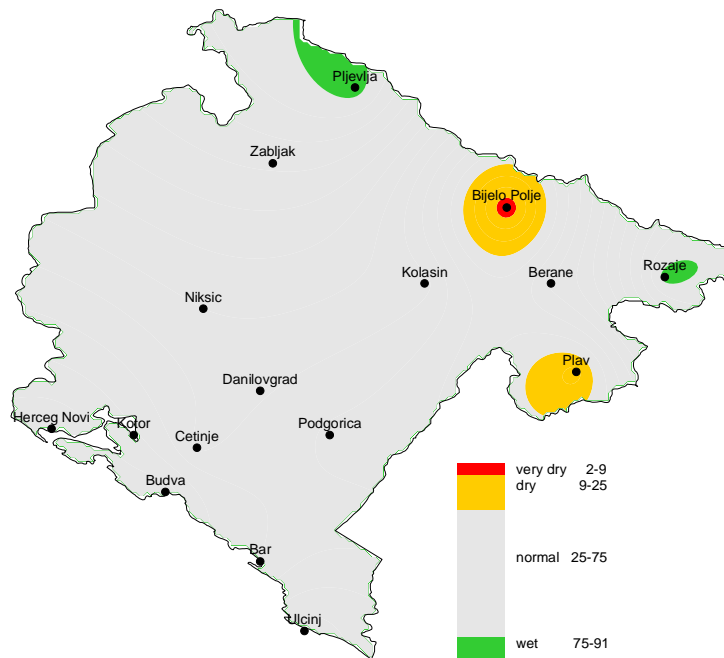
CRNA GORA
HIDROMETEOROLOŠKI ZAVOD



The range of the total precipitation amount was from 85 mm in Bijelo Polje to 1192 mm in Cetinje (in Podgorica 513 mm). Comparing with average winter precipitation for 1961-1990, the range was from 36% in Bijelo Polje to 136% in Pljevlja (in Podgorica 89%).

The maximum height of the snow cover was from 6 cm in Ulcinj to 208 cm in Žabljak (in Podgorica 57 cm what is a new record). The new records of the snow height were registered in Kolašin, Plav and Pljevlja.

Raspodjela percentila količine padavina za zimu 2011/2012.godinu



EXTREMES:

- From the 1st to the 8th February strong cyclonic activity over Montenegro with exceptional amount of snowfall in whole state – from the coastal area up to the

IV Proleterske Brigade 19, 81000 Podgorica

TEL: (+382) 20 655 183 FAX: (+382) 20 655 197

E-mail: office@meteo.co.me Web: www.meteo.co.me



CRNA GORA
HIDROMETEOROLOŠKI ZAVOD

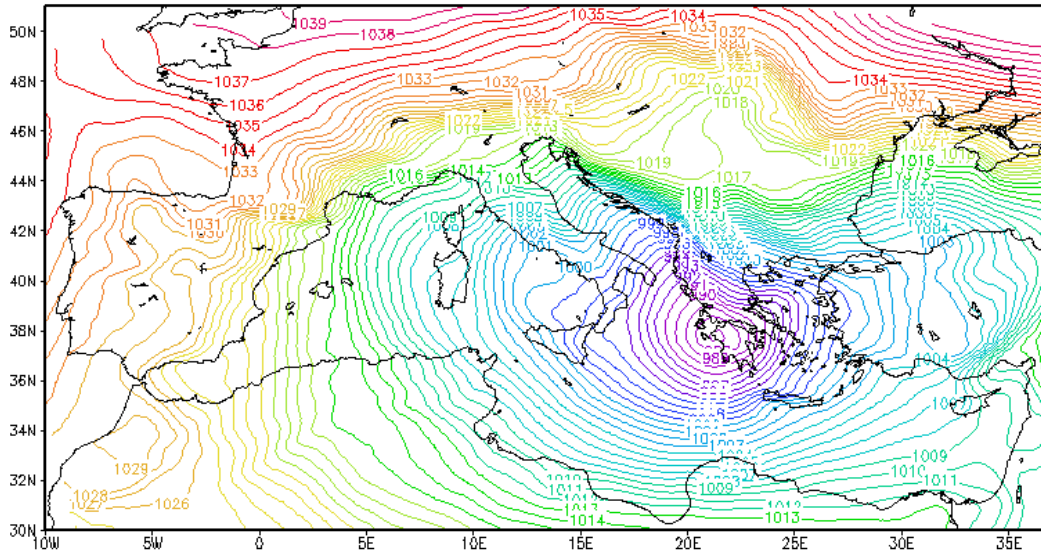


mountains (example: the 7th February - strong gust and heavy snowfall (satellite image and model's result fig 1 and 2);

- At the end of the cyclonic activity in the 8th February, the snow height in some parts of Montenegro was over 100 cm (e.g. in Zabljak 175 cm, Kolasin 123 cm, Plav 115 cm, and Rozaje 103 cm);
- A new cyclonic activity started in the 10th February with the heavy snowfall during the night. Especially in the surroundings of Kolasin, Cetinje, Niksic the snow was falling up to 10 hours with exceptionally high intensity. The consequences were new records in snow height (over those from the half century ago);
- In comparison to previous extreme winter events in 1954, 1963, and 2005, winter in **2012** was exceptional also due to the highest than ever intensity of the snowfall.

Worketa_Slop_new(0.1 x 0.1 degree)
MSL Pressure [hPa]

initialisation: 2012.02.07. 00:00 UTC
valid(+09h): 2012.FEB.07 09:00 UTC



GRADS: COILA/IGES

2012-02-07-05:12

Figure 1. Model result

IV Proleterske Brigade 19, 81000 Podgorica

TEL: (+382) 20 655 183 FAX: (+382) 20 655 197

E-mail: office@meteo.co.me Web: www.meteo.co.me



CRNA GORA
HIDROMETEOROLOŠKI ZAVOD

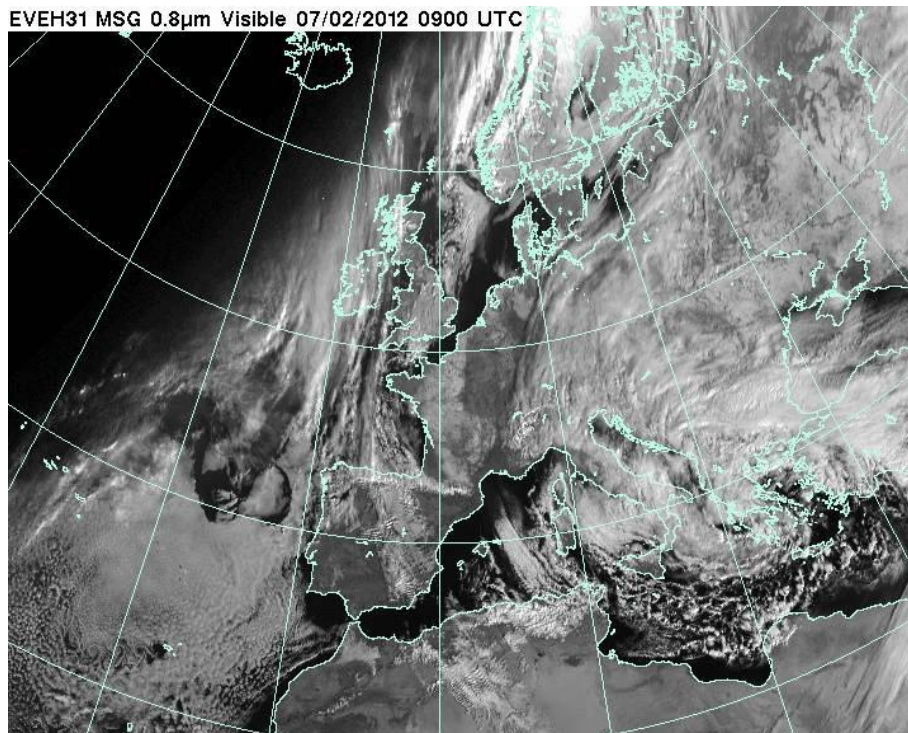


Figure 2. Satellite image

IV Proleterske Brigade 19, 81000 Podgorica

TEL: (+382) 20 655 183 FAX: (+382) 20 655 197

E-mail: office@meteo.co.me Web: www.meteo.co.me