

Country: Republic of Moldova

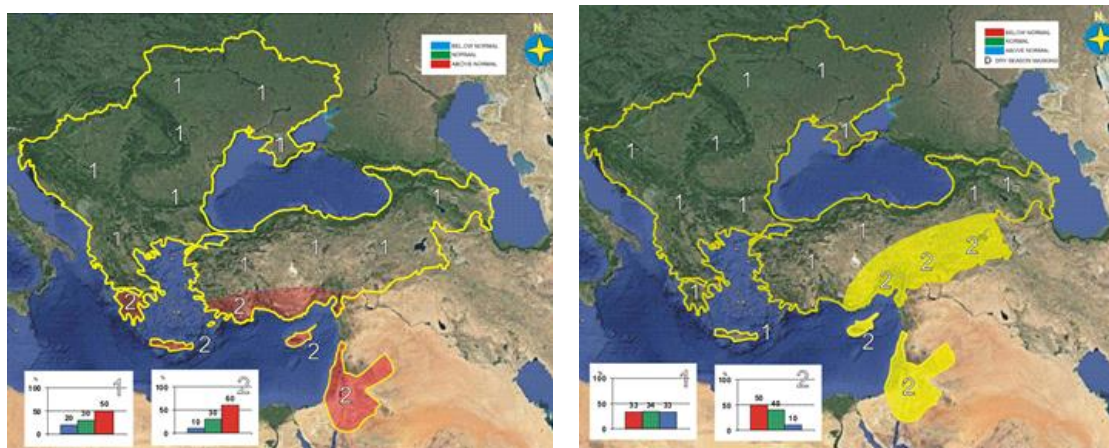
Institute: State Hydrometeorological Service

Name: Lidia Trescilo

E-mail: lidia.trescilo@meteo.gov.md

Climatological reference period: 1991-2020.

1. SEECOF-32 Climate outlook for Winter Season 2024/25 for the Moldova



Above normal

Below, near or above normal

2. Analysis of the Winter Season 2024/25 in Moldova

The winter 2024-25 in the Republic of Moldova it was mostly warm and with insufficient precipitation.

The average air temperature for the season was $0.0..+1.8^{\circ}\text{C}$, which is $1.5-2.3^{\circ}\text{C}$ higher than the norm and is observed on average once every 5-10 years. (*Fig.1,2*).

The absolute minimum air temperature during the season was -16.9°C (February 23, MS Baltata). The absolute maximum reached $+17.0^{\circ}\text{C}$ (January 9, Ceadir Lunga MS), which in January is recorded on average across the territory once every 30-40 years.

Very warm weather was observed in January (*Fig. 3*). The average monthly air temperature was $+2.0..+3.8^{\circ}\text{C}$, which is $5.0-6.5^{\circ}\text{C}$ above normal and is observed on average once every 20-30 years. The average air temperature for the third ten-day period of January was $+3.2..+5.7^{\circ}\text{C}$, which is $7.2-8.4^{\circ}\text{C}$ above normal and is observed for the second time during the entire observation period.

It should be noted that high temperatures persisted from December to January. The average air temperature for this period was $+1.5..+3.5^{\circ}\text{C}$, which is $4.0-5.0^{\circ}\text{C}$ higher than the norm and is observed on average once every 20-30 years.



Fig.1. Mean Temperature in Winter, °C



Fig.2. Temperature Anomalies in Winterr, °C

In February the weather was colder than usual. The average monthly air temperature was $-1.5..-3.0^{\circ}\text{C}$, which is $0.5-1.8^{\circ}\text{C}$ below normal.

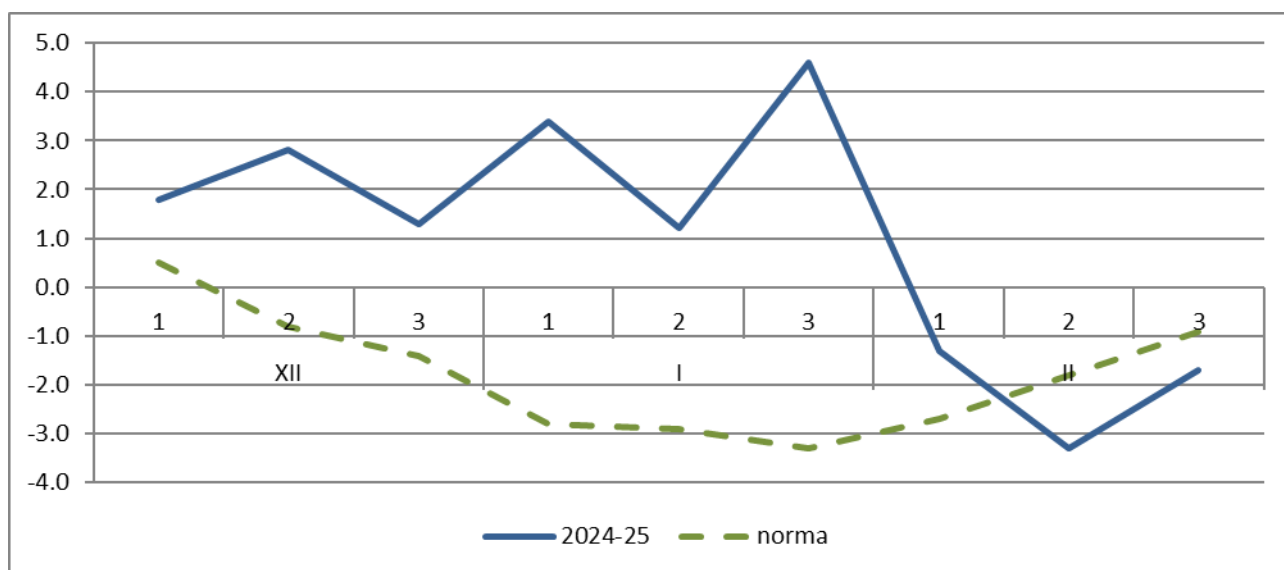


Fig. 3. Average decadal air temperature, °C, MS Chisinau

The amount of precipitation for the season on 90% of the territory was 40-70 mm (45-75% of the norm), only in some places did 75-80 mm fall (80-85% of the norm). (Fig. 4,5).

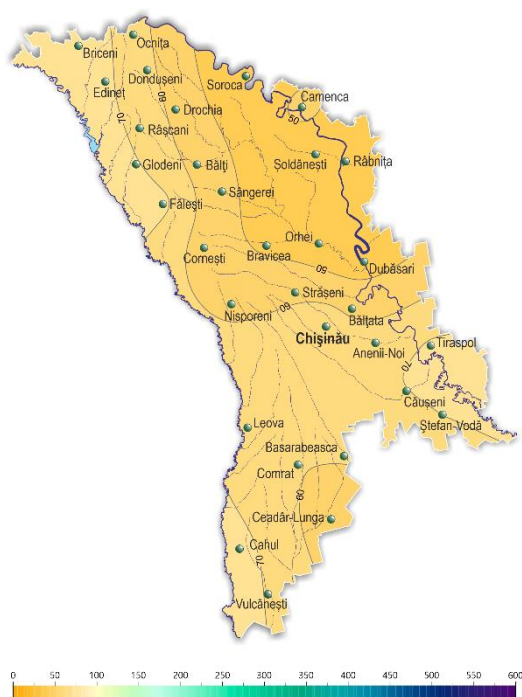


Fig.4. Amount of precipitation in Winter, mm

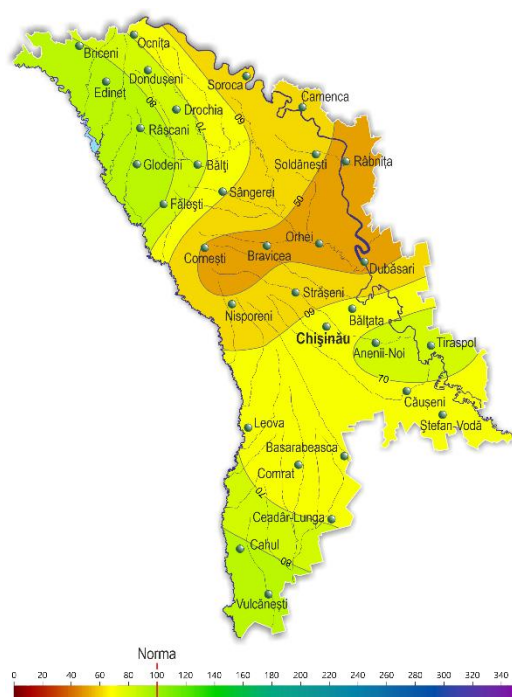


Fig.5. Precipitation Anomalies in Winter, %

By region of the country, precipitation was distributed as follows:

- in the north of the country – mostly 40-70 mm (45-75% of the norm), only in some places
- 75-80 mm (80-85% of the norm);
- in the center of the country – 40-70 mm (40-70% of the norm);
- in the south of the country – 55-70 mm (55-75% of the norm).

A significant shortage of precipitation was observed in January-February. Their amount for this period did not exceed 10-25 mm (10-40% of the norm). (Fig.6).

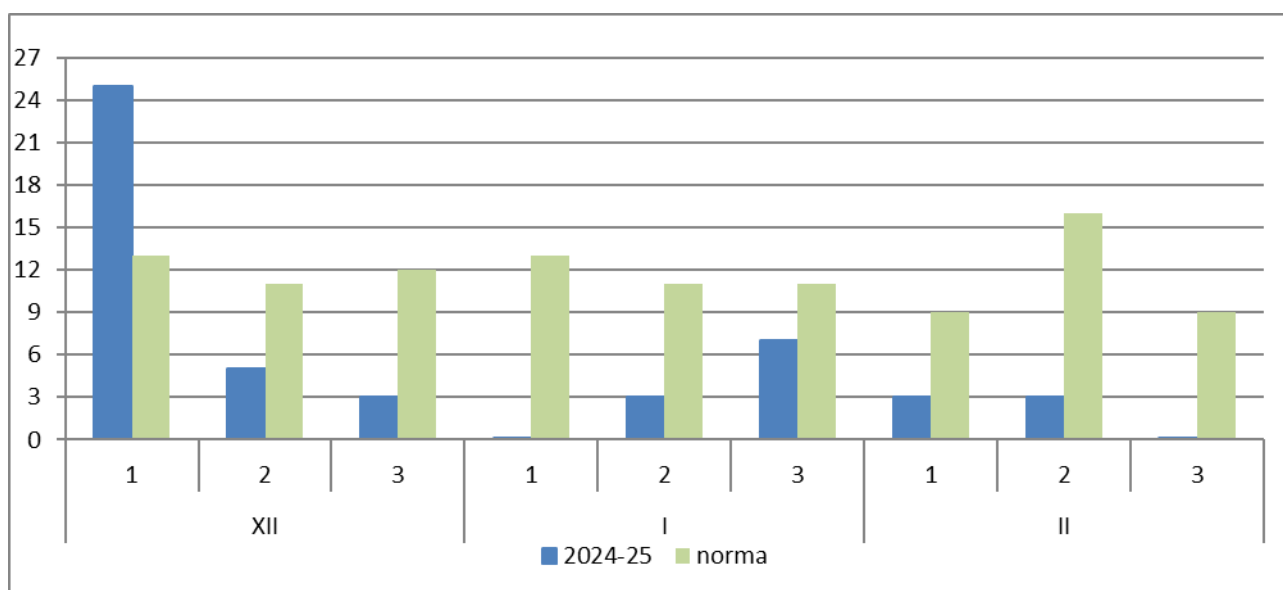


Fig. 6. The amount of precipitation per decade, mm, MS Bravicea

On some days during the season, snow cover was observed across the country, but it was unstable. Its maximum height at meteorological sites reached 10 cm (February, Ștefan Vodă MS).

Compared to the winter of 2023-24, the average air temperature for this season was 1.5-2.0°C lower. The winter of 2020-21 is similar in terms of temperature conditions. Weather conditions for the wintering of autumn crops, fruit trees and vines in the winter period 2023/24 were satisfactory.

**3. Assessment of the SEECOF-32 Climate outlook for
2024/25 Winter season**

Country	Seasonal temperature		Seasonal precipitation		High Impact Events
	Observed	SEECOF-32 climate outlook for temperature	Observed	SEECOF-32 climate outlook for precipitation	
Republic of Moldova	Above normal	Above normal	Below normal	Below, near or above normal	During the season there were fogs, ice and frost deposits, increased wind speeds up to 19 m/s, and icy roads