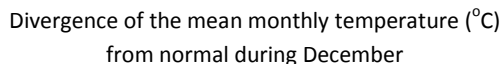


The seasonal forecast for **December** suggested that temperature would be slightly above normal in most of the coastal areas. The accumulated precipitation of **December** was disappointing since the forecast suggested a mainly dry month with accumulation ranging only from 50% to 75% of normal, except the western and northern coastal parts where the accumulation would range almost up to normal. Low accumulations characterized all the surrounding area.



Percentage of the mean monthly precipitation (%)
compared with the normal of December

St. No.	Station Name	Mean Daily Maximum Temperature (°C)	Normal Value (1981-2010)	Difference from Normal Value	Highest Daily Maximum Temperature (°C)	Lowest Daily Maximum Temperature (°C)	Mean Daily Minimum Temperature (°C)	Normal Value (1981-2010)	Difference from Normal Value	Lowest Daily Minimum Temperature (°C)	Highest Daily Minimum Temperature (°C)	Monthly Total Precipitation (mm)	Normal Value (1981-2010)	Difference from Normal Value
41	POLIS CHRYSOCHOUS	20.4	18.0	2.4	22.7	16.3	9.9	9.3	0.6	5.0	14.8	25.9	93.6	-67.7
82*	PAFOS (AIRPORT)	20.2	18.9	1.3	22.5	16.1	11.1	10.0	1.1	5.3	18.5	26.5	90.1	-63.6
225	PRODROMOS (C.F.C.)	12.3	8.3	4.0	20.7	3.9	3.5	2.6	0.9	-3.4	11.2	73.4	157.3	-83.9
666*	ATHALASSA (RADIOSONDE)	20.3	17.3	3.0	22.9	13.6	8.1	7.0	1.1	3.3	14.5	28.6	57.2	-28.6
731	LARNAKA (AIRPORT)	20.0	18.6	1.4	21.9	15.4	10.7	9.2	1.5	6.1	15.1	13.4	79.0	-65.6
800**	ACHNA (DASAKI)	19.6	18.0	1.6	22.4	14.0	9.5	8.3	1.2	4.0	14.8	9.2	76.8	-67.6

* Pafos' and Athalassa's Station Normal Values cover the period 1983-2010

** Achna's Temperature Normal Values cover the period 1981-2007

= VALUES FROM AUTOMATIC WEATHER STATION

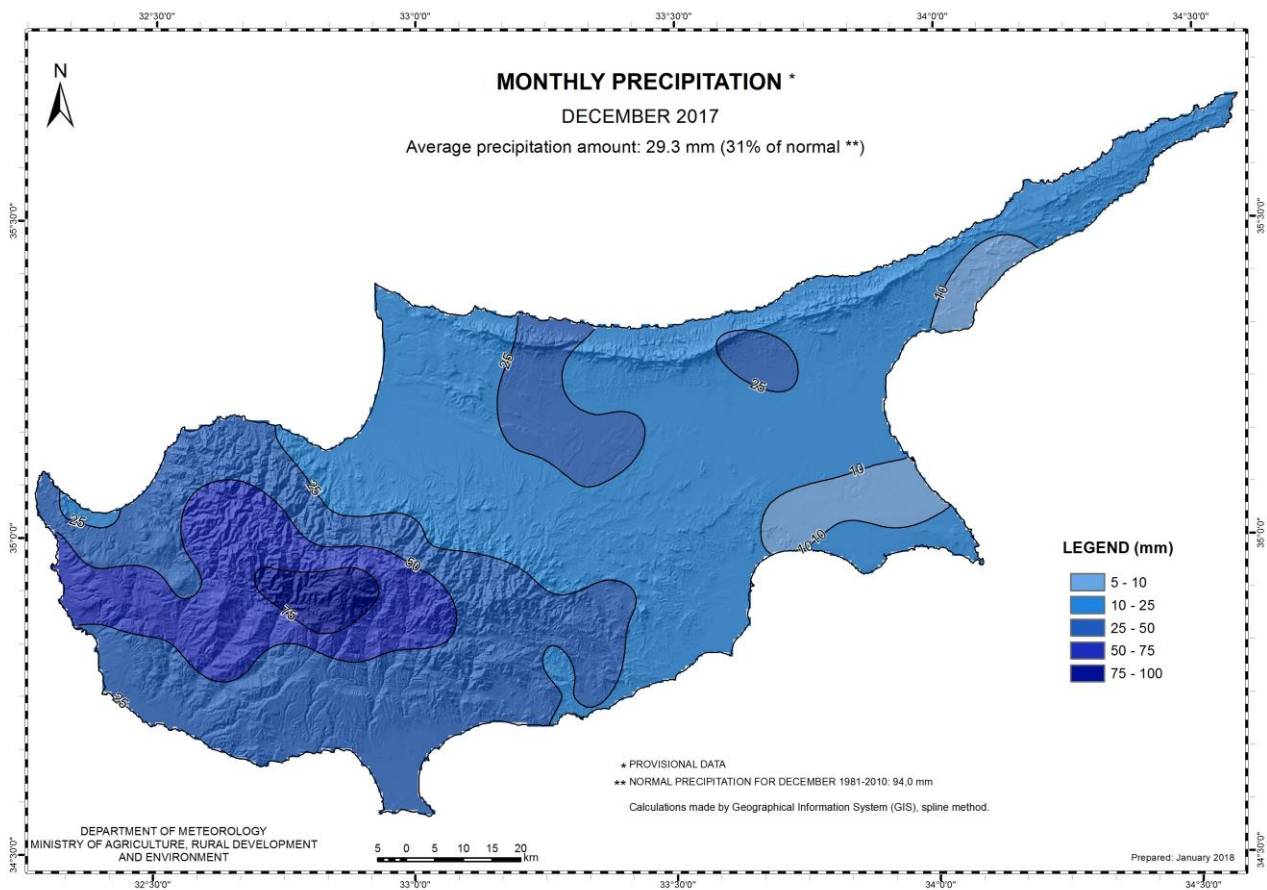
Is evident that the model did not perform well, since it did not forecast correct both the observed temperature anomalies and the accumulated precipitation. The seasonal forecast for **December** suggested that temperature would be normal inland and slightly above normal in most of the coastal areas. From the recorded data is shown that mean daily maximum and most of the mean daily minimum temperatures were above normal, not only inland but also for the coastal areas. All the mean daily maximum temperatures that were recorded, were significantly above normal with differences that ranged between 1.3 and 4°C. Most of the mean daily minimum temperatures were above normal, but not far from the normal temperatures.

Extremes (deviating by 4°C or more from normal) were also recorded at almost all the selected meteorological stations. As an example note the recorded maximum of Prodromos that was 20.7°C (with a normal of 18°C) and the maximum of Athalassa that was 22.9°C (with a normal of 17.3°C). Concerning the mean daily minimum temperatures note the recorded minimum of Prodromos that was -3.4°C (with a normal of 2.6°C) and the minimum of Pafos that was 5.3°C (with a normal of 10°C).

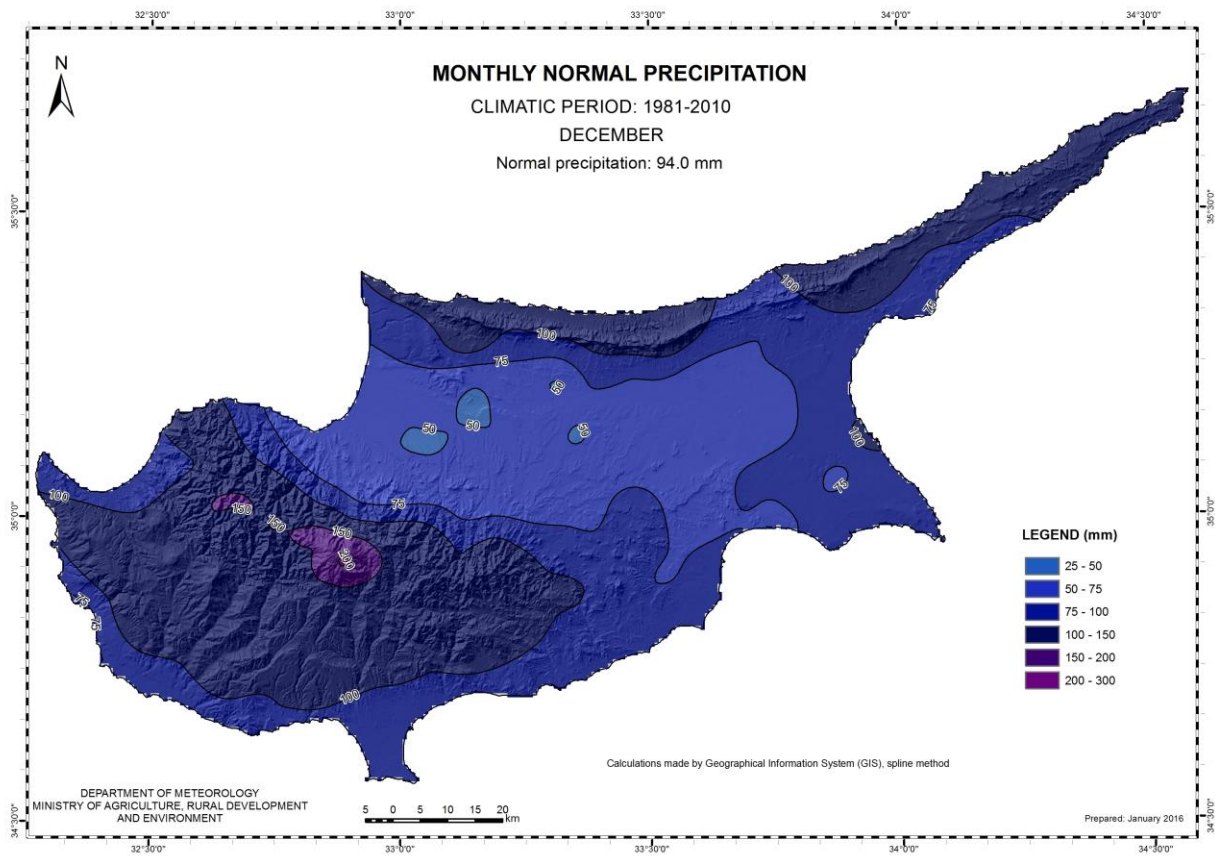
As regarding the accumulated precipitation, **December** was a very dry month, as presented from the table above. From the distribution (provisional accumulated precipitation chart) of the accumulated precipitation of **December** is evident that the surface distribution was well below normal reaching only 29,3mm (31% of normal). **December** 2017 is ranked as the 15th driest **December** since 1901. It is worth mentioning that the higher amount of precipitation of the month was recorded on the 30th and 31st of **December**.

Based on the provisional data, snowfall was recorded during the 5, 6, 24 and 30-31 of the month. Hail was recorded on the 5th and 24th of the month.

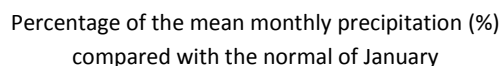
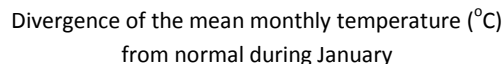
For the purpose of better visualization of **December** accumulated precipitation, a chart of Cyprus with the total preliminary accumulated precipitation is presented.



A Cyprus chart with the normal (period 1981 to 2010) accumulated precipitation for the month of **December** is also presented.



The seasonal forecast for **January 2018** suggested that temperature would be slightly above normal (by 1°C to 2°C). The forecast for the accumulated precipitation of **January** was again disappointing since it was suggesting a mainly dry month with accumulation ranging only from 50% to 75% of normal, except the western part where the accumulation would range almost up to normal. Low accumulations were characterizing all the surrounding area.



TEMPERATURE AND PRECIPITATION PROVISIONAL DATA FOR JANUARY 2018

St. No.	Station Name	Mean Daily Maximum Temperature (°C)	Normal Value (1981-2010)	Difference from Normal Value	Highest Daily Maximum Temperature (°C)	Lowest Daily Maximum Temperature (°C)	Mean Daily Minimum Temperature (°C)	Normal Value (1981-2010)	Difference from Normal Value	Lowest Daily Minimum Temperature (°C)	Highest Daily Minimum Temperature (°C)	Monthly Total Precipitation (mm)	Normal Value (1981-2010)	Difference from Normal Value
41	POLIS CHRYSOCHOUS	18.1	16.3	1.8	20.4	13.0	8.8	7.6	1.2	4.7	13.1	130.1	85.3	44.8
82*	PAFOS (AIRPORT)	18.1	17.1	1.0	20.2	15.0	9.6	8.3	1.3	5.3	14.6	100.3	78.8	21.5
225	PRODROMOS (C.F.C.)	8.5	6.3	2.2	15.5	2.7	1.0	0.7	0.3	-3.2	6.9	279.7	150.0	129.7
666*	ATHALASSA (RADIOSONDE)	18.3	15.5	2.8	21.5	13.2	6.7	5.4	1.3	2.6	9.9	67.6	48.8	18.8
731	LARNAKA (AIRPORT)	18.3	16.8	1.5	21.1	14.0	8.7	7.5	1.2	5.6	12.6	98.1	73.7	24.4
800**	ACHNA (DASAKI)	17.3	16.3	1.0	19.8	13.2	7.2	6.6	0.6	1.6	10.7	61.4	67.3	-5.9

* Pafos' and Athalassa's Station Normal Values cover the period 1983-2010

** Achna's Temperature Normal Values cover the period 1981-2007

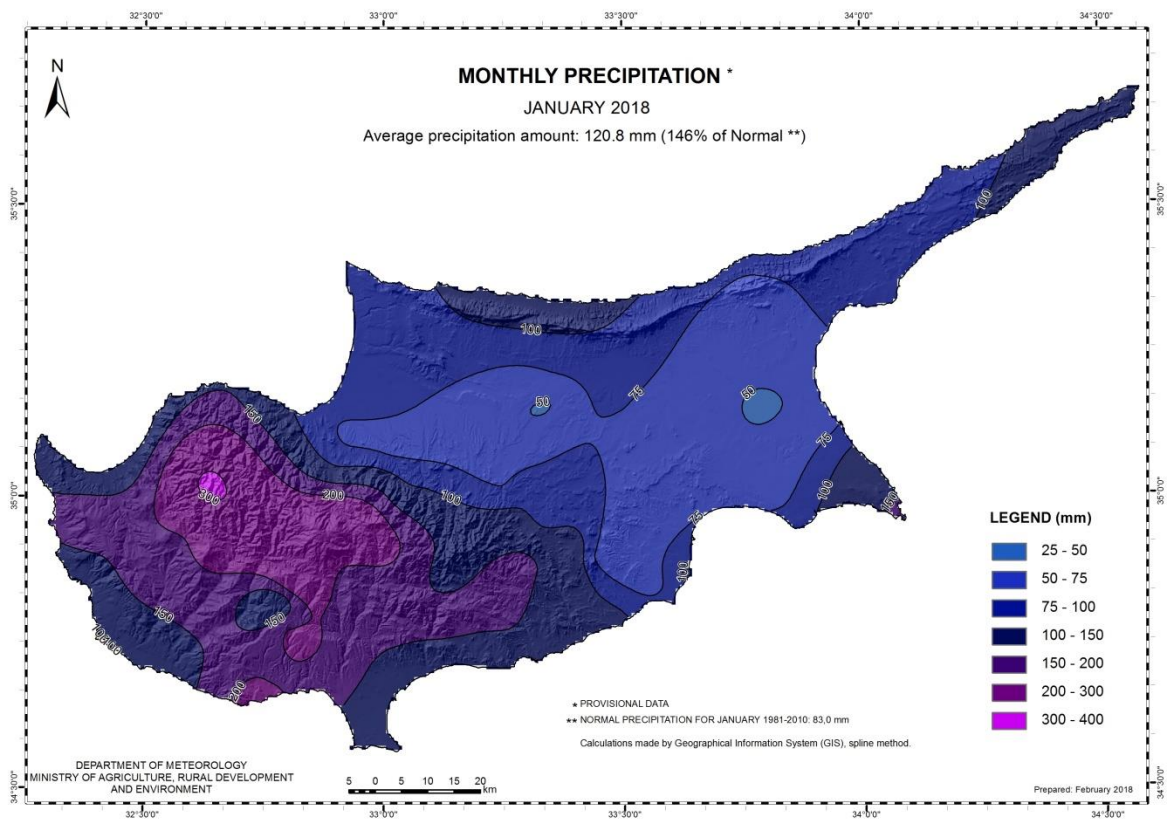
= VALUES FROM AUTOMATIC WEATHER STATION

it seems that the model performed moderately, since it forecast correct the temperature anomalies, but it did not forecast well the accumulated precipitation. **January** was warmer than normal as the model suggested. From the recorded data is shown that the mean daily maximum and the mean daily minimum temperatures were above normal, not only inland but also for the coastal areas. Extreme high temperatures were recorded, as an example Prodromos recorded a highest daily maximum of 15.5°C (with the normal being 6.3°C) and Athalassa recorded a highest daily maximum of 21.5°C (with the normal being 15.5°C). Extremes low temperatures were also recorded, as an example note the lowest daily minimum temperature of Achna that was 1.6°C (with a normal of 6.6°C).

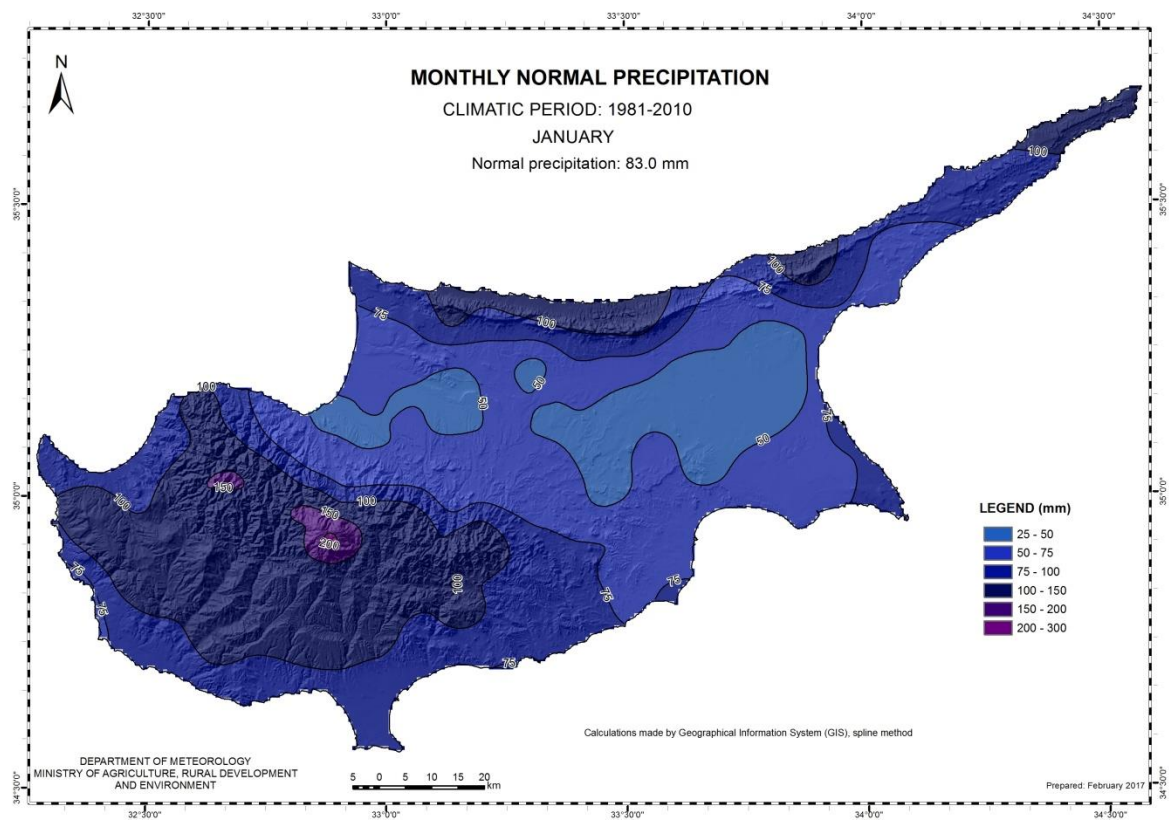
From the provisional data recorded by the Department of Meteorology the model did not perform well over the amount of the accumulated precipitation, as the actual accumulated precipitation was more than the expected. During the periods 2-5, 12-14, 16-18 and 21-27 of **January** local showers and isolated showers resulted in accumulated precipitation of 120.8mm or 146% of normal. It is worth mentioning that on 4th and 22nd of **January** hail was reported. Also, for the 5th of **January** an EMMA yellow level warning for rainfall and thunderstorms was issued.

It is worth mentioning that based on the provisional data there were 8 days of snow during **January**, having on the 25th of **January**, a 13cm of new snow on Troodos mountains.

For the purpose of better visualization of **January** accumulated precipitation, a chart of Cyprus with the total preliminary accumulated precipitation is presented.

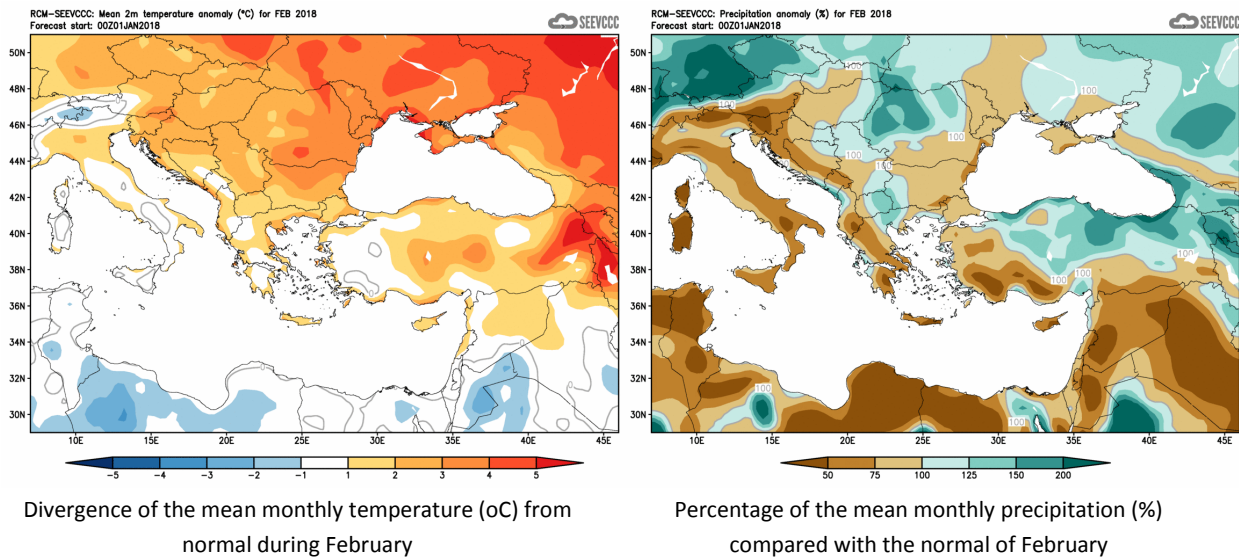


A Cyprus chart with the normal (period 1981 to 2010) accumulated precipitation for the month of **January** is also presented.



Evaluation of Februarys seasonal forecast for the area of Cyprus

The seasonal forecast for **February** was suggesting a warmer and drier than normal month. **February** was to be warmer than normal by 1°C to 2°C, while the accumulated precipitation was again disappointing since the forecast suggested a relatively dry month with accumulation ranging between 50% and 75% of normal over the greater part of the island and over southeast coast below 50% of normal.



ROM-SEEVCC: Precipitation anomaly (X) for FEB 2018
Forecast start: 00Z01JAN2018

Percentage of the mean monthly precipitation (%) compared with the normal of February

From the provisional data recorded by the Department of Meteorology, for the selected portion of the meteorological stations, which are presented in the table below,

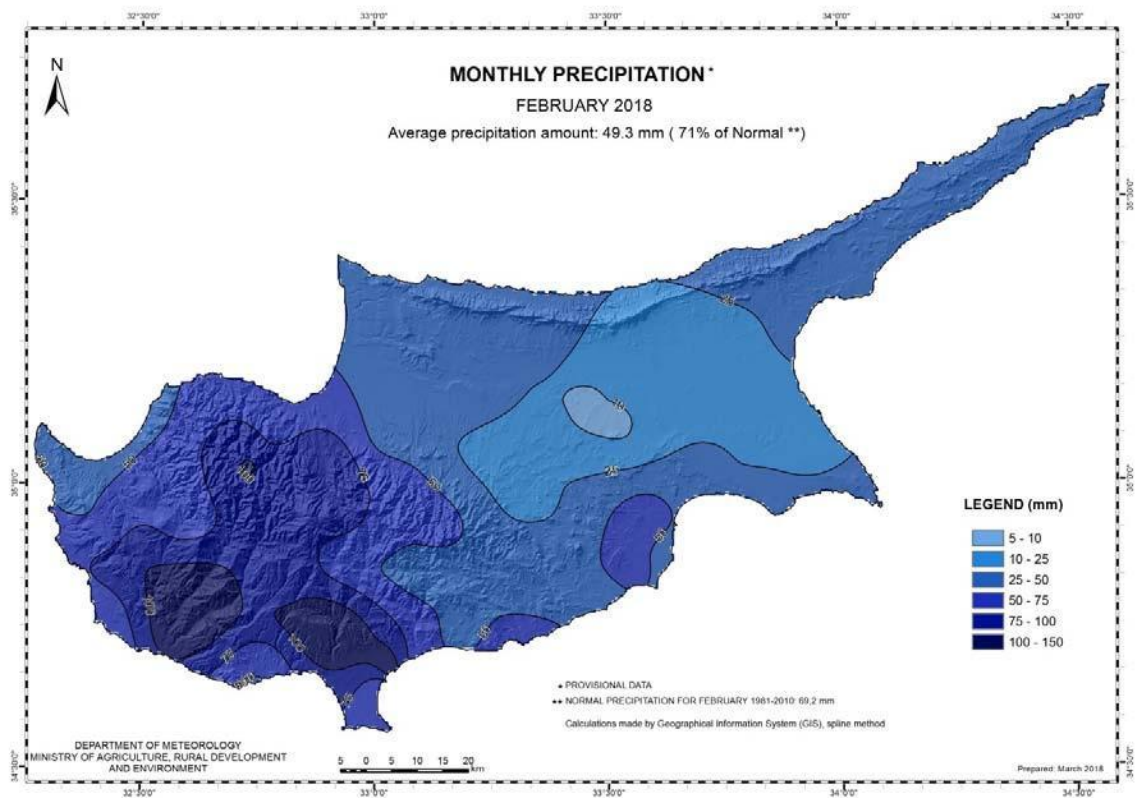
TEMPERATURE AND PRECIPITATION PROVISIONAL DATA FOR FEBRUARY 2018														
St. No.	Station Name	Mean Daily Maximum Temperature (°C)	Normal Value (1981-2010)	Difference from Normal Value	Highest Daily Maximum Temperature (°C)	Lowest Daily Maximum Temperature (°C)	Mean Daily Minimum Temperature (°C)	Normal Value (1981-2010)	Difference from Normal Value	Lowest Daily Minimum Temperature (°C)	Highest Daily Minimum Temperature (°C)	Monthly Total Precipitation (mm)	Normal Value (1981-2010)	Difference from Normal Value
41	POLIS CHRYSOCHOUS	19.6	16.3	3.3	22.0	15.9	9.6	7.3	2.3	7.2	12.0	38.1	68.5	-30.4
82*	PAFOS (AIRPORT)	19.3	17.1	2.2	21.4	16.7	10.7	8.1	2.6	6.9	17.0	69.2	59.8	9.4
225	PRODROMOS (C.F.C.)	11.5	6.7	4.8	18.2	4.8	3.6	0.5	3.1	0.4	11.1	85.6	128.7	-43.1
666*	ATHALASSA (RADIOSONDE)	19.9	16.0	3.9	25.2	15.4	8.0	5.3	2.7	4.1	12.6	13.7	44.5	-30.8
731	LARNAKA (AIRPORT)	19.4	17.0	2.4	21.9	16.2	10.1	7.1	3.0	6.5	14.7	40.9	50.3	-9.4
800**	ACHNA (DASAKI)	19.0	16.5	2.5	21.6	14.9	8.6	6.3	2.3	3.9	12.2	28.4	50.7	-22.3
* Pafos' and Athalassa's Station Normal Values cover the period 1983-2010														
** Achna's Temperature Normal Values cover the period 1981-2007														
= VALUES FROM AUTOMATIC WEATHER STATION														

it seems that the model performed moderately, while it picked up the tendency of the temperature anomaly and also the anomaly of precipitation over the area of Cyprus. So **February** was rather warm, (warmer than the models suggestion) and relatively dry as almost the model was suggesting.

Extreme high temperatures were recorded as over Athalassa with an extreme maximum of 25.2°C (with normal 16.0°C or over Prodromos with an extreme maximum of 18.2°C with the normal only 6.7°C. Extreme low temperatures were also recorded as Achna with a recorded low of 3.9°C while normal is 8.6°C.

February's accumulated precipitation resulted in 71% of normal as almost the model suggested. It resulted also in extreme accumulated precipitation as was the accumulation of 91.6mm which was recorded on the dawn of the 16th over the area of Limassol (southern part). During this rain event flash floods were recorded while a yellow EMMA was recorded.

For the purpose of better visualization of **February** accumulated precipitation, a chart of Cyprus with the total preliminary accumulated precipitation is presented.



A Cyprus chart with the normal (period 1981 to 2010) accumulated precipitation for the month of **February** is also presented.

