

CLIMATOLOGICAL ANALYSIS

SEASON

WINTER 2014/2015



BOSNIA AND HERZEGOVINA
FEDERATION OF BOSNIA AND HERZEGOVINA
FEDERAL HYDROMETEOROLOGICAL INSTITUTE

CLIMATOLOGICAL ANALYSIS SEASONE WINTER 2014 - 2015

Sarajevo, March 2015

Mean air temperatures during the climatological winter 2014 - 2015 (1st December 2014 – 28th February 2015) ranged between 1.2 °C in Bugojno and 7.1 °C in Mostar. On the mountain areas air temperatures were in the range of -5.7 °C on Bjelasnica to -0.3 °C on Ivan Sedlo. Temperature deviations from the normal values during the winter, which covers the period (1961-1990) were positive. Deviation of the mean temperature than the average winter temperature ranged from 0.2 °C on Bjelasnica to 2.5 °C in Gradacac. By percentage temperature values are classified into the category of normal, warm and very warm.

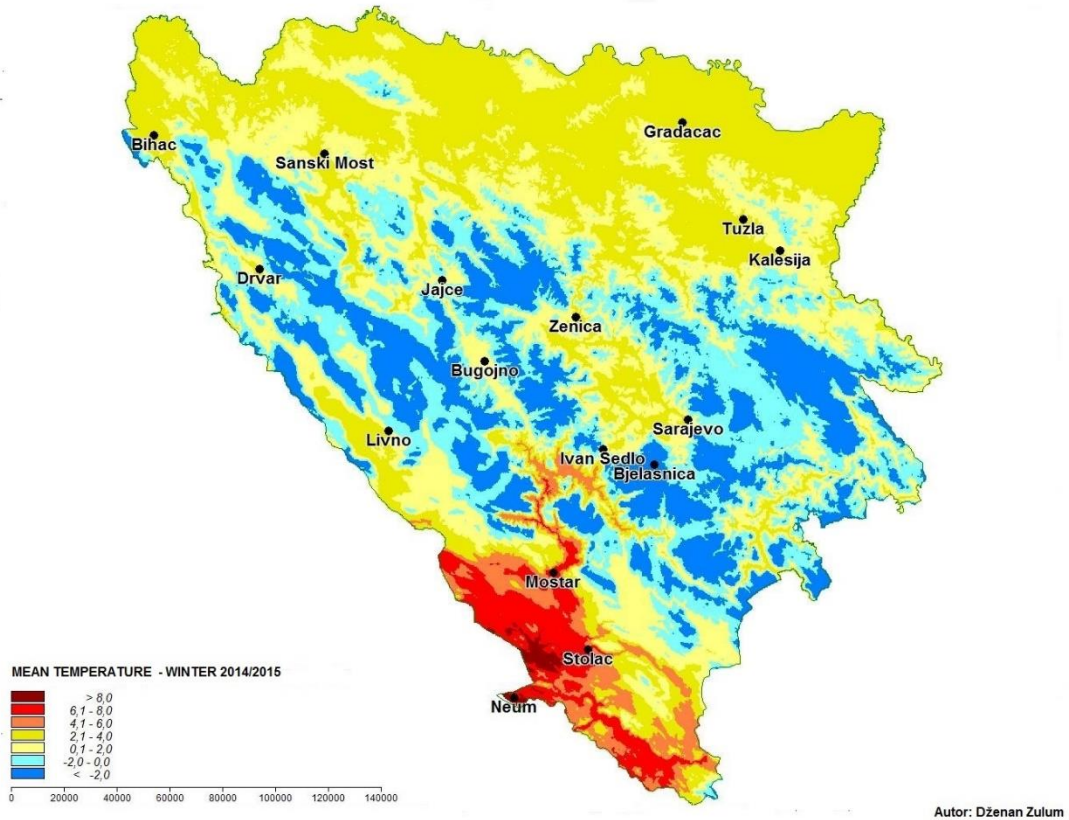
STATION	DEVIATION (°C)				PERCENTILES
	DECEMBER	JANUARY	FEBRUARY	WINTER	
Bihać	3,1	3,7	-1,1	1,9	80
Bjelašnica	0,5	0,6	-0,4	0,2	57
Bugojno	2,6	1,8	0,7	1,7	82
Drvar	2,2	2,7	0,2	1,7	82
Gradacac	3,1	4,4	0,2	2,5	93
Ivan Sedlo	2,0	1,7	0,2	1,3	79
Jajce	1,8	2,1	-0,4	1,1	74
Kalesija	1,2	2,0	-0,4	0,9	68
Livno	2,2	1,7	0,3	1,3	81
Mostar	1,6	1,3	0,8	1,2	81
Sarajevo	2,4	1,8	0,2	1,4	76
Sanski Most	2,4	3,1	-0,7	1,6	82
Stolac	2,3	1,4	0,6	0,8	76
Tuzla	2,0	3,1	0,6	1,8	86
Zenica	2,3	2,0	0,6	1,6	82

Table 1 Deviation middle of summer air temperatures in relation to cli standard normal and the corresponding percentiles

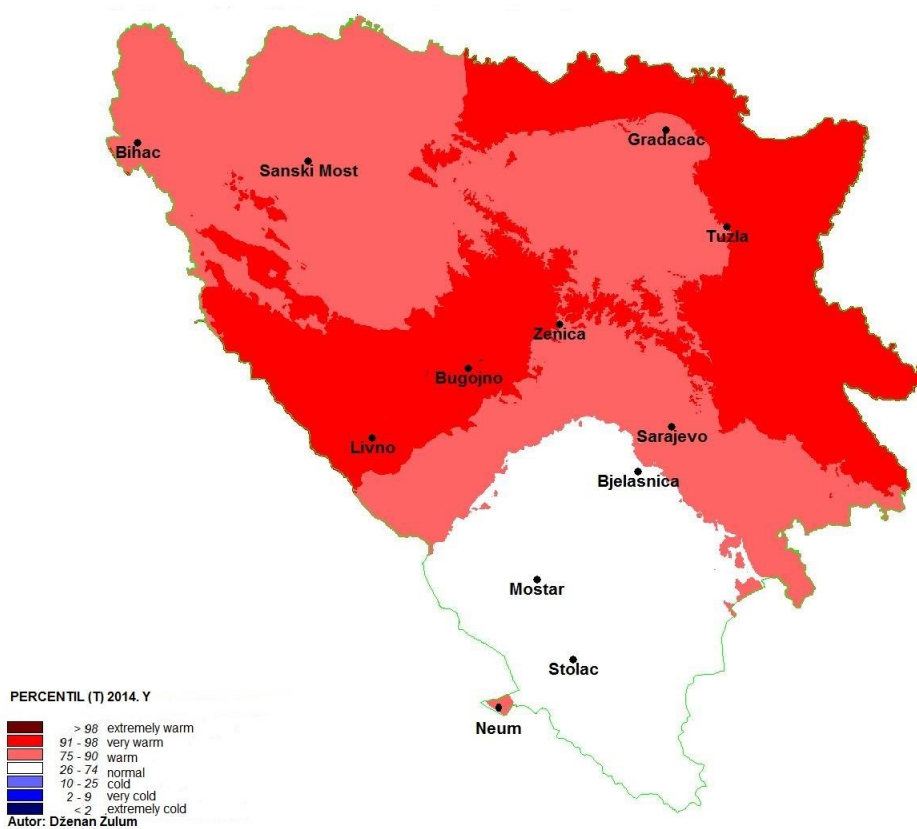
STATION	MOUNTH			STANICA	MOUNTH		
	December	January	February		December	January	February
Bihać				Livno			
Bjelašnica				Mostar			
Bugojno				Sarajevo			
Drvar				Sanski Most			
Gradacac				Stolac			
Ivan Sedlo				Tuzla			
Jajce				Zenica			

	ekstremno toplo		vrlo toplo		toplo		normalno		hladno		vrlo hladno		ekstremno hladno
--	-----------------	--	------------	--	-------	--	----------	--	--------	--	-------------	--	------------------

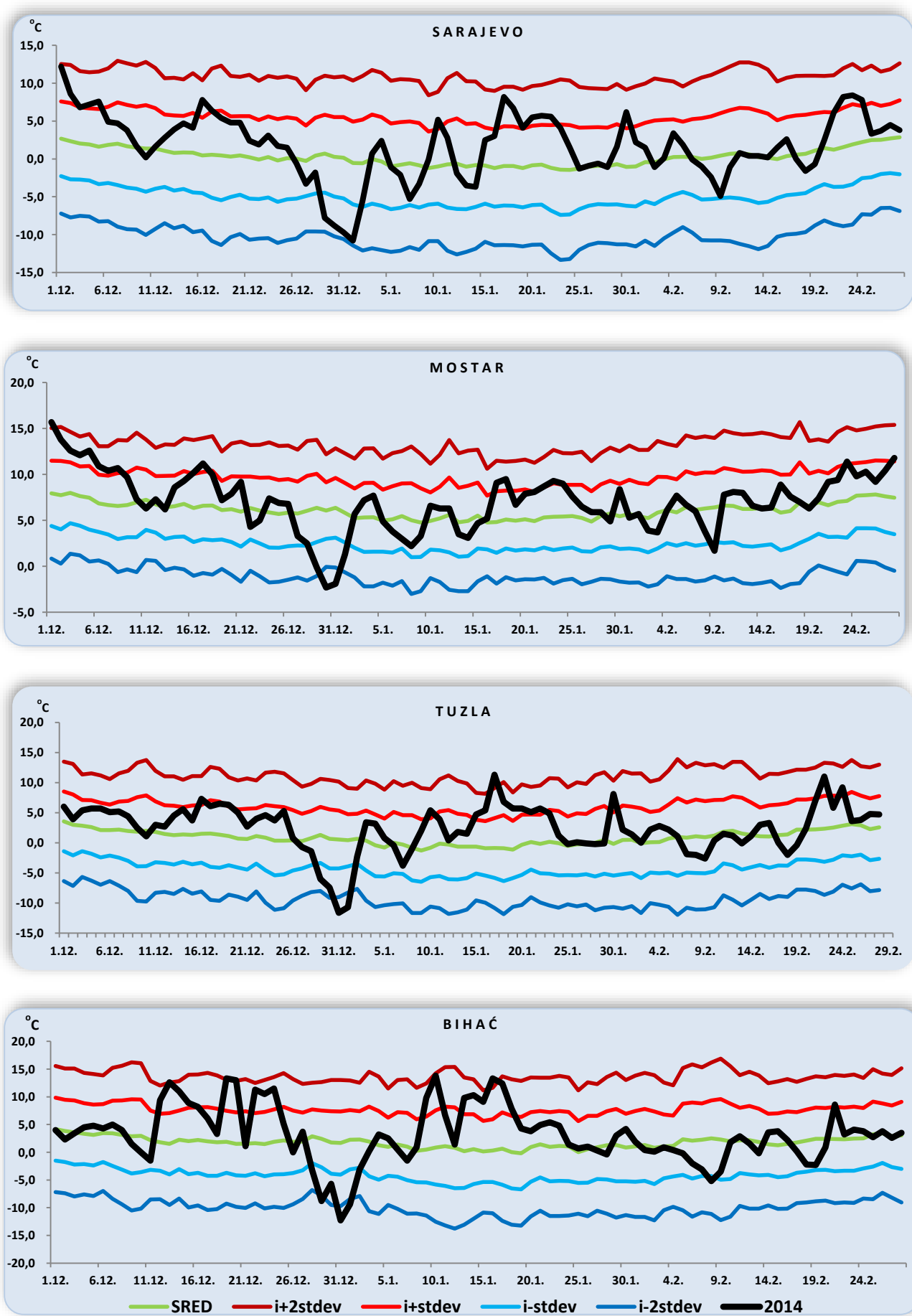
Table 2 Overview of marks mean temperature during the summer months by the method of percentiles



Map 1 Mean air temperature winter 2014/2015. year (°C)



Map 2 Air temperature during winter 2014/2015 using percentile method compared to the 1961-1990 base period



Graph 1-4 Mean daily air temperatures during summer 2014

Analysis of the monthly amount of precipitation expressed in% of average values shows that during the winter 2014 - 2015, deviations from normal precipitation amounts ranged from 109.5% in Kalesija to 212.4% on Bjelasnica. By percentage amounts of precipitation are classified into categories of normal, rainy, very rainy and extremely rainy. The measured amounts of precipitation were in the range of 206.2 mm in Zenica to 596.2 mm in Mostar.

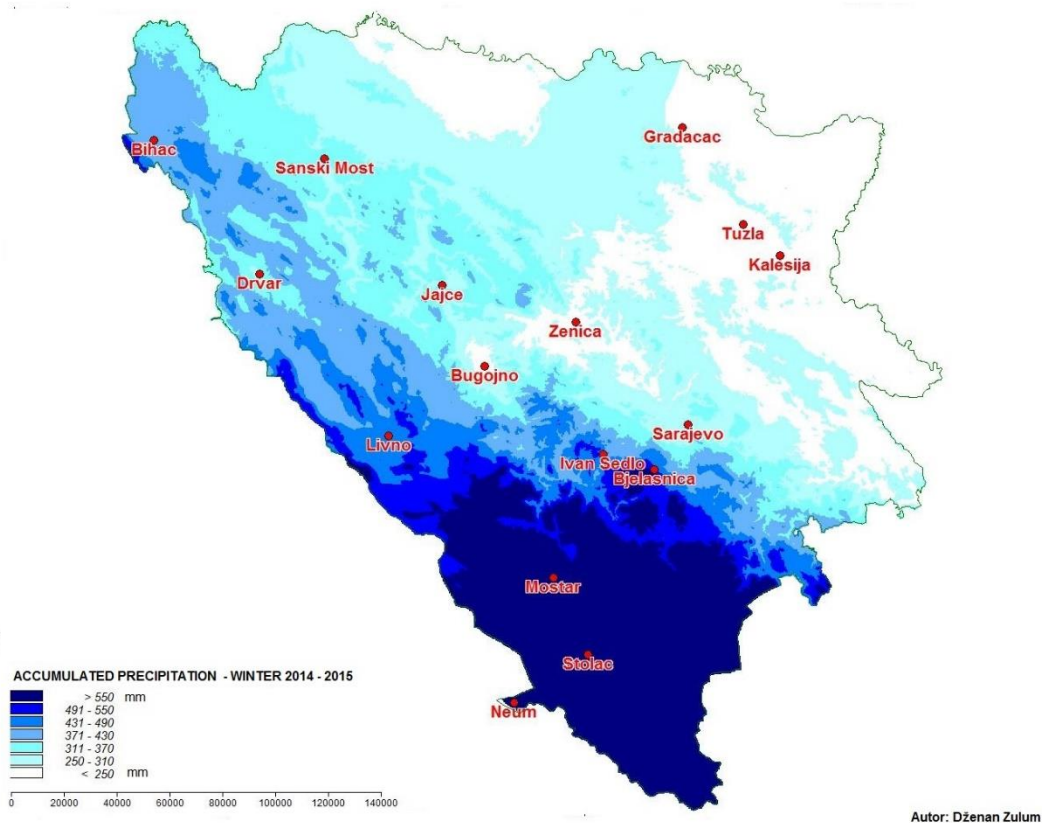
STATION	DEVIATION (%)				PERCENTILES
	DECEMBER	JANUARY	FEBRUARY	WINTER ¹	
Bihać	87,4	187,2	159,9	140,7	92
Bjelašnica	255,8	222,7	156,9	212,4	100
Bugojno	108,1	177,0	78,0	117,8	73
Drvar	127,6	159,3	61,8	116,1	68
Gradačac	113,9	142,8	109,7	120,4	77
Ivan Sedlo	92,2	194,1	81,5	188,2	99
Jajce		190,8	122,9	140,7	88
Kalesija	109,5	109,7	107,3	109,5	73
Livno	155,1	159,8	114,4	143,1	85
Mostar	93,7	169,3	99,2	120,2	73
Sarajevo	98,5	157,6	84,5	113,4	67
Sanski Most	109,5	148,3	194,3	145,6	94
Stolac	168,9	227,4	88,3	163,6	95
Tuzla	105,7	129,0	111,3	115,4	70
Zenica	102,0	176,3	98,5	123,8	80

Table 5 Deviation summer precipitation in relation to the climatological standard normal and the corresponding percentiles

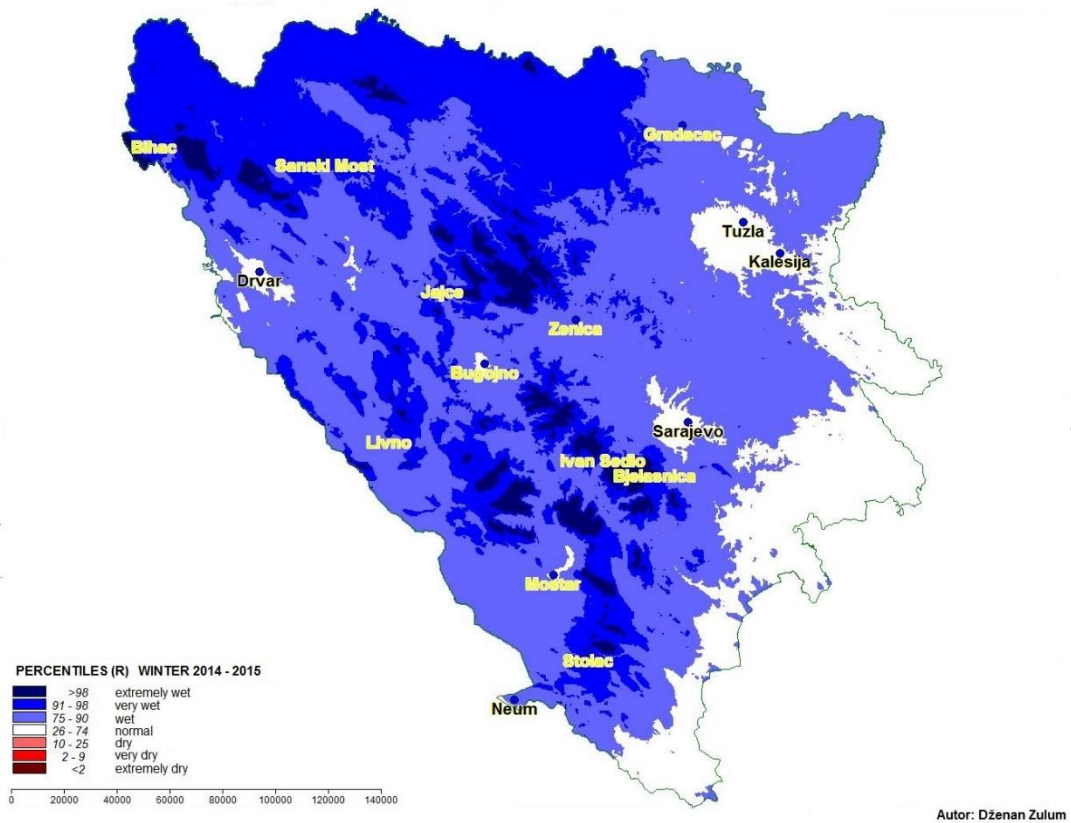
STATION	MOUNTH			STATION	MOUNTH		
	December	January	February		December	January	February
Bihać				Livno			
Bjelašnica				Mostar			
Bugojno				Sarajevo			
Drvar				Sanski Most			
Gradačac				Stolac			
Ivan Sedlo				Tuzla			
Jajce				Zenica			

Extremely dry	Very dry	dry	normal	wet	Very wet	Extremely wet
---------------	----------	-----	--------	-----	----------	---------------

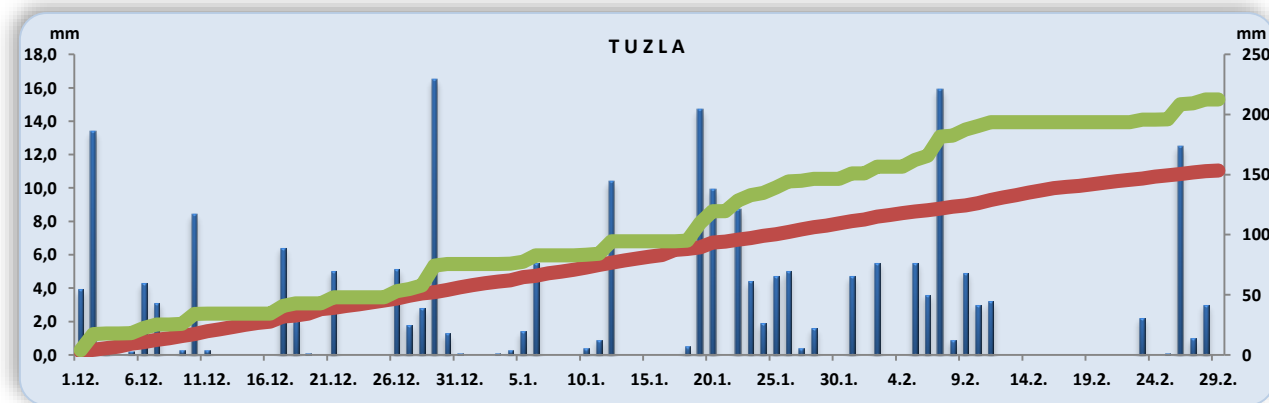
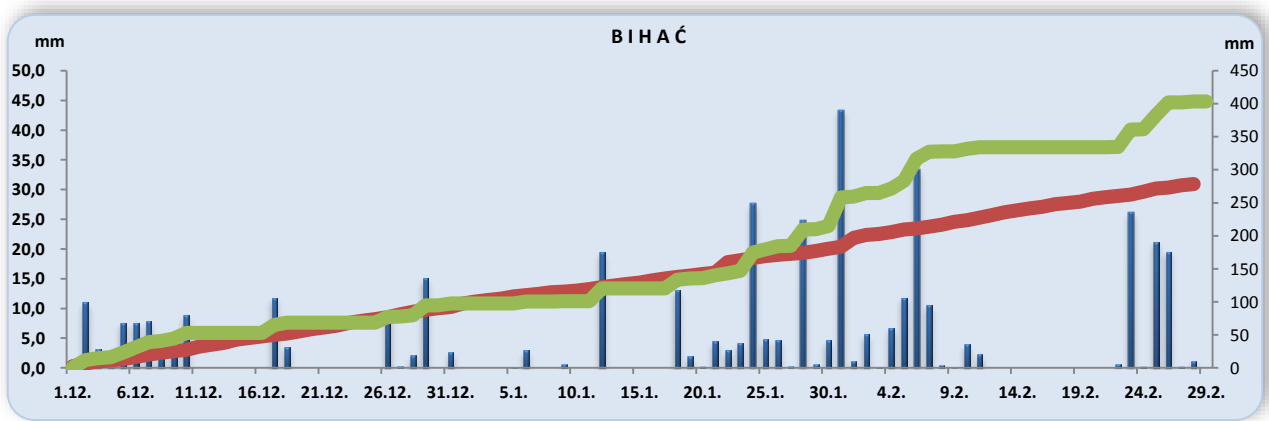
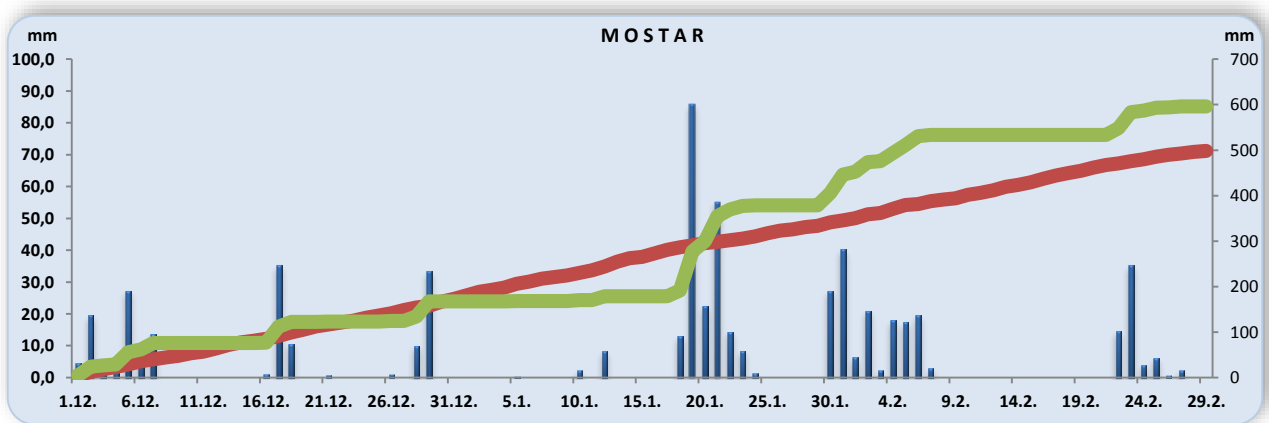
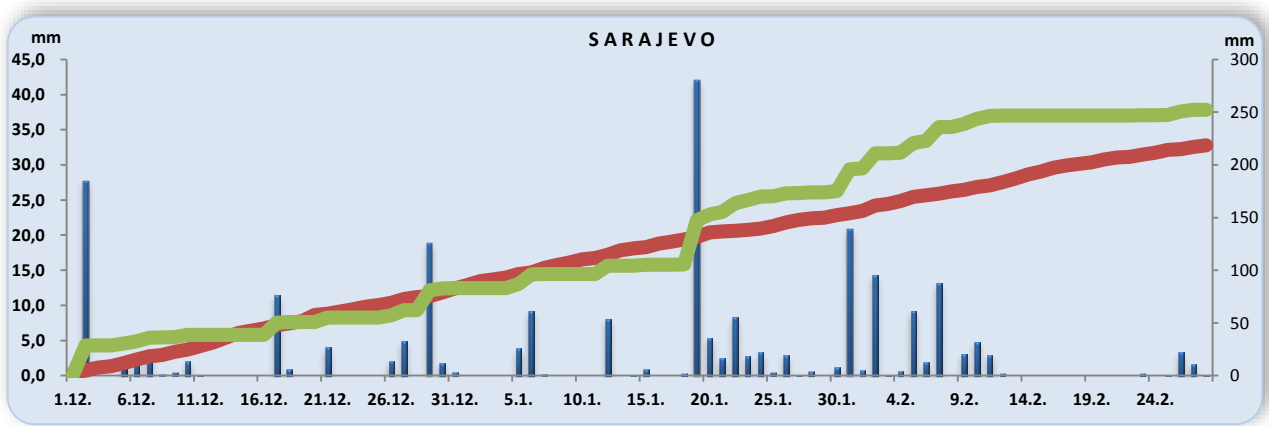
Table 6 Overview of marks on precipitation by month basis percentile



Map 3 Amount precipitation – winter 2014/2015. year (mm)



Map 4 Precipitation sums using percentile method during winter 2014/2015 compared to the base period (1961 – 1990)



Graph 5-8 daily and cumulative rainfall in the summer of 2014

The table below presents the normal (1981-2010) values (N) versus the recorded (R) values of both temperature (mean max and mean min) and accumulated precipitation for the winter period of December, January and February.

	MEAN DAILY MAXIMUM TEMPERATURE (°C)						MEAN DAILY MINIMUM TEMPERATURE (°C)						ACUMULATED PRECIPITATION (mm)							
	december		january		february		december		january		february		december		january		february			
	R	N	R	N	R	N	R	N	R	N	R	N	R	N	R	N	R	N		
Sarajevo	6,1	4,2	4,0	3,6	6,5	6,0	0,4	-1,9	-2,2	-3,3	-1,7	-2,6	83,4	84,1	112,6	66,5	56,6	62,8		
Mostar	10,8	9,8	9,3	9,1	11,4	11,1	5,7	3,6	2,9	2,4	4,1	2,9	167,5	176,2	278,8	138,9	149,9	120,2		
Tuzla	7,6	5,6	7,1	4,6	7,3	7,3	0,0	-2,0	-1,6	-3,7	-1,5	-2,6	75,6	67,6	75,5	56,8	61,3	48,6		
Bihać	8,0	6,1	7,4	4,7	4,7	6,8	2,0	-1,0	0,4	-2,6	-2,0	-2,0	87,4	127,9	160,7	94,1	145,2	92,6		
Gradačac	7,6	5,4	7,1	4,3	5,6	6,8	2,2	-1,0	0,9	-2,3	-0,4	-0,9	73,3	65,6	84,8	58,7	67,5	46,6		
Livno	7,3	5,9	5,6	5,4	6,6	6,5	-0,5	-3,1	-3,0	-4,5	-3,1	-4,0	194,5	128,7	151,9	90,4	104,3	83,2		
S Most	8,0	5,9	6,7	4,8	5,5	7,9	0,2	-2,0	-1,3	-4,0	-2,4	-3,2	91,8	91,9	100,4	66,7	120,9	64,2		
Bjelašnica	-2,2	-2,9	-	-	-3,6	-3,8	-5,3	-4,7	-6,3	-7,0	-8,4	-8,2	-8,9	-9,0	211,1	108,3	173,4	86,2	131,0	99,2

¹ The actual amount of precipitation compared to the average sum

dzenanz@fhmzbih.gov.ba

Analizu pripremio: Dženan Zulum

