

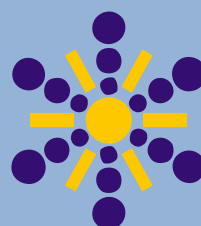
CLIMATOLOGICAL
ANALYSIS

SEASON

SUMMER
2014



Topčić Polje



Mean air temperature during summer 2014. year ranged between 18,3 °C in Drvar and 23,4 °C u Mostar. In the mountain areas mean air temperature ranged between 9,2 °C on Bjelašnica and 15,8 °C on Ivan Sedlo. Temperature deviations from the normal value during the summer, which is for the period (1961-1990) were positive except in Mostar summer was cooler than normal temperatures in summer. Deviation of average temperatures ranged from -0.1°C in Mostar to 1.2°C in Bugojno. By percentage temperature values into the category of normal, warm and very warm. The highest daily air temperature during summer 2014, measuring 36°C was observed on 12 August in Zenica.

STANICA	DEVIATION (°C)				PERCENTILI
	JUNY	JULY	AUGUST	SUMMER	
Bihać	1,2	0,5	0,6	0,8	85
Bjelašnica	0,4	0,0	0,9	0,4	74
Bugojno	1,4	0,7	1,6	1,2	97
Drvar	1,3	0,2	0,6	0,7	89
Gradačac	1,4	1,0	0,8	1,1	89
Ivan Sedlo	0,3	-0,2	0,5	0,2	65
Livno	1,7	0,1	0,6	0,8	94
Mostar	1,1	-1,2	-0,1	-0,1	47
Sarajevo	0,7	0,6	1,2	0,8	84
Sanski Most	1,0	0,8	0,7	0,8	88
Stolac	0,8	-1,0	0,1	0,1	44
Tuzla	0,8	1,1	0,7	0,9	90
Zenica	0,8	1,1	1,3	1,0	90

Table 1 Deviation middle of summer air temperatures in relation to cli standard normal and the corresponding percentiles

STATION	MONTH			STATION	MONTH		
	Juny	July	August		Juny	July	August
Bihać				Mostar			
Bjelašnica				Sarajevo			
Bugojno				Sanski Most			
Drvar				Stolac			
Gradačac				Tuzla			
Ivan Sedlo				Zenica			
Livno							

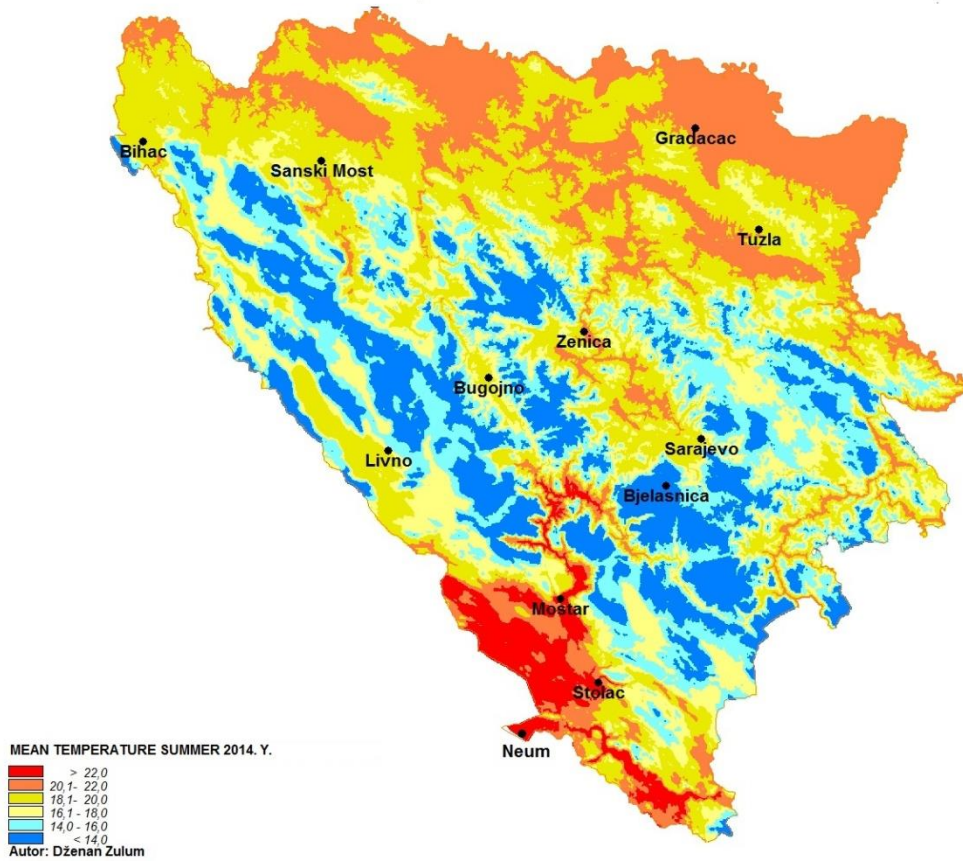
	extremely warm	very warm	warm	normal	cold	very cold	extremely cold
--	----------------	-----------	------	--------	------	-----------	----------------

Table 2 Overview of marks mean temperature during the summer months by the method of percentiles

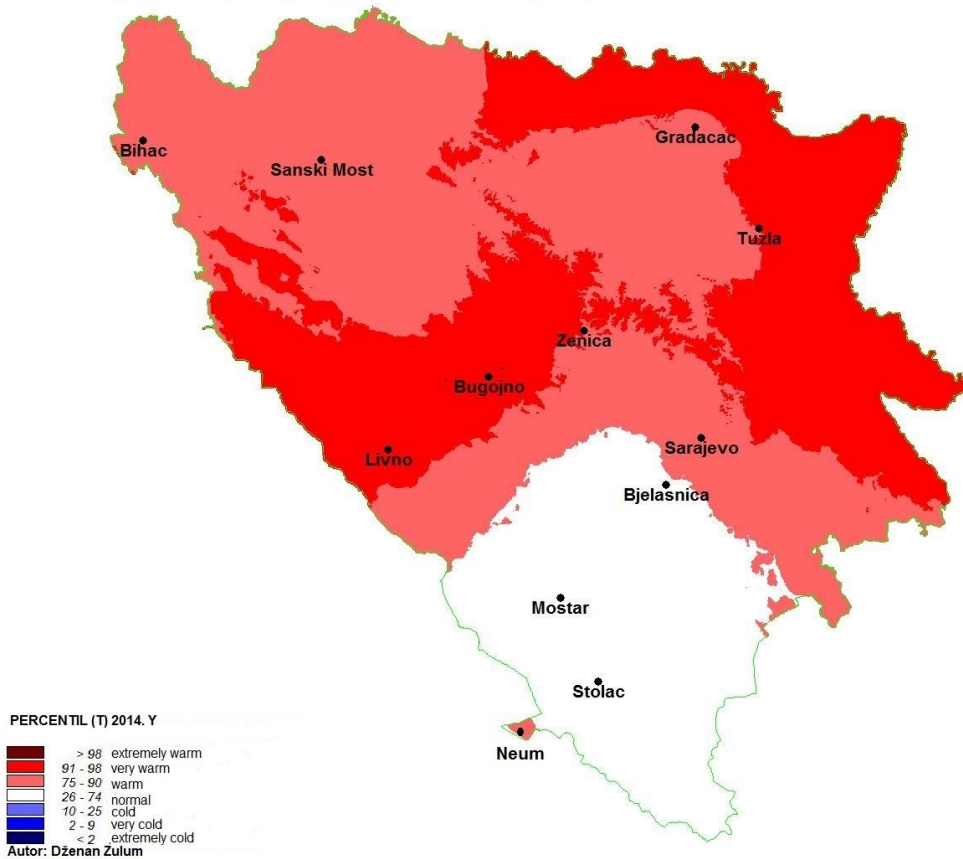
Absolute maximum and minimum air temperatures during the period under review have not been surpassed

	Juny			July			August		
Bihać	2,0	0,8	0,9	1,1	0,6	-0,2	0,7	0,7	0,3
Gradačac	2,9	0,7	0,4	2,2	0,6	1,0	0,6	1,0	0,5
Livno	3,4	0,5	1,2	1,3	0,4	-0,7	0,3	0,6	1,2
Mostar	3,3	0,0	-0,2	0,0	-1,3	-2,3	-0,9	0,0	0,3
Sarajevo	1,8	-0,5	1,2	1,8	-0,2	0,4	0,5	1,5	1,5
Tuzla	1,5	0,3	0,5	1,9	0,3	1,0	0,5	1,2	0,6

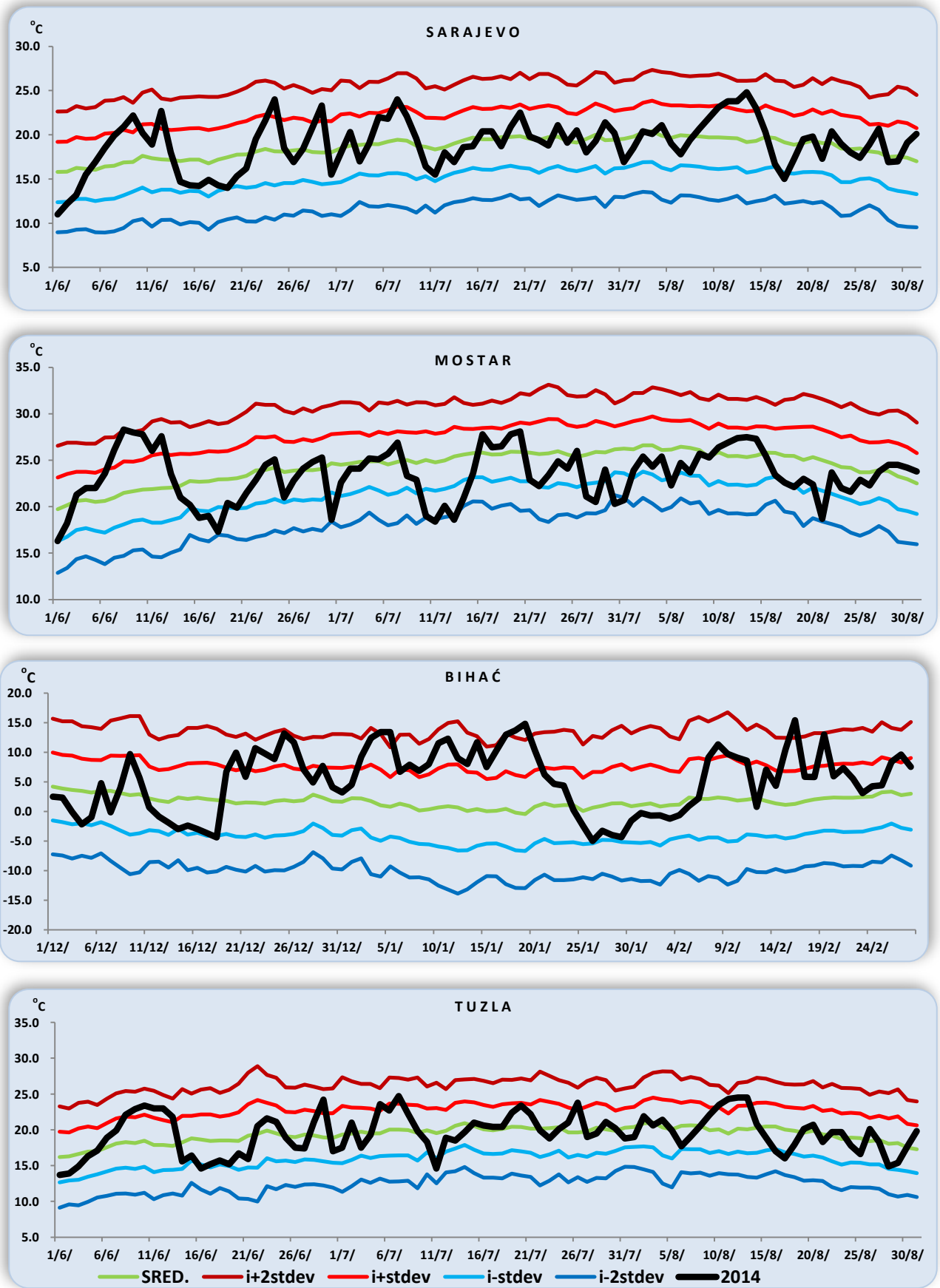
Table 3 Deviations medium, decade values compared to long term average



Map 1 Mean air temperature summer 2014. year (°C)



Map 2 Air temperature during summer 2014 using percentile method compared to the 1961-1990 base period



Graph 1-4 Mean daily air temperatures during summer 2014

Total precipitation in the summer of 2014 were above long-term averages. The maximum deviations from the average rainfall amounts were recorded in Herzegovina. Total precipitation ranged from 276.5 l/m² in Sarajevo to 439.5 l/m² on Bjelasnica. Deviations from the average amount of precipitation ranged from 114.3% in Sarajevo to 199.9% to Mostar. By percentage amounts of rainfall are classified as a category normally rainy and extremely rainy.

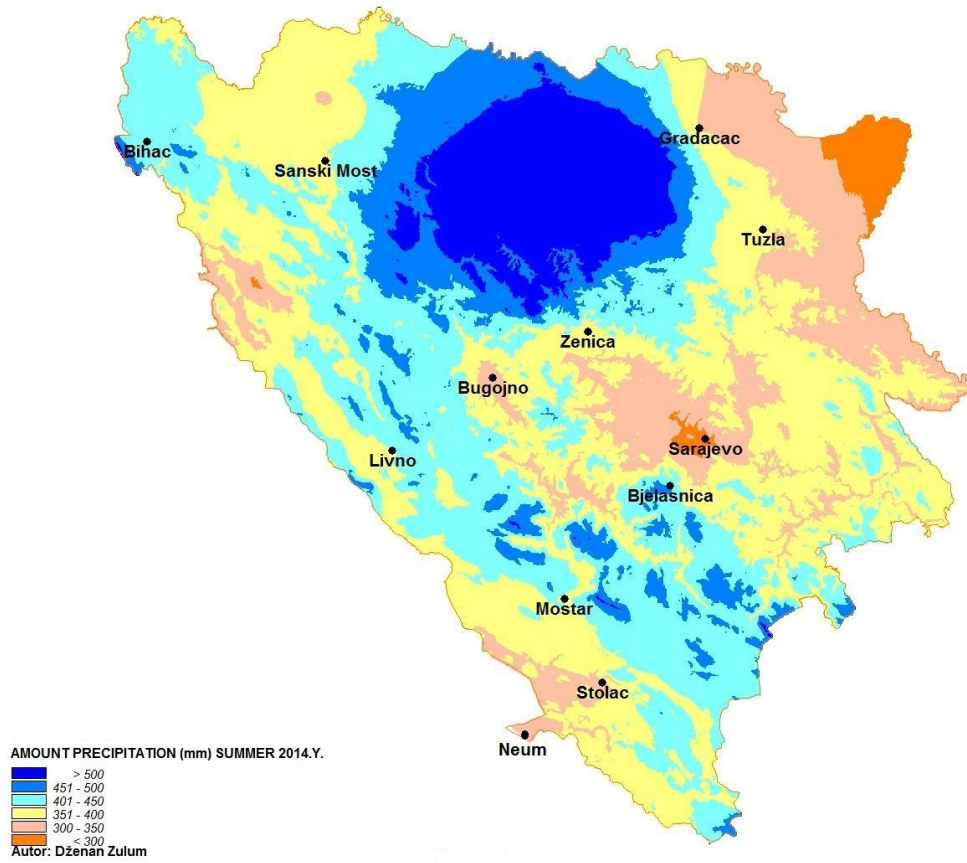
STATION	DEVIATION (%)				PERCENTIL
	JUNY	JULY	AUGUST	SUMMER	
Bihać	79,5	212,4	96,3	129,0	87
Bjelašnica	153,0	235,9	72,0	149,6	95
Bugojno	124,3	258,2	104,7	159,1	98
Drvar	118,6	122,0	99,5	113,1	61
Gradačac	73,3	91,5	259,1	133,1	86
Ivan Sedlo	158,4	136,2	96,2	130,7	83
Livno	167,4	328,2	113,0	186,1	99
Mostar	151,7	321,8	179,9	199,9	99
Sarajevo	137,5	91,3	110,6	114,3	68
Sanski Most	66,5	156,0	184,1	133,1	89
Stolac	187,3	230,9	136,6	181,3	92
Tuzla	55,0	119,2	218,2	123,3	74
Zenica	111,0	199,6	221,0	172,2	93

Table 5 Deviation summer precipitation in relation to the climatological standard normal and the corresponding percentiles

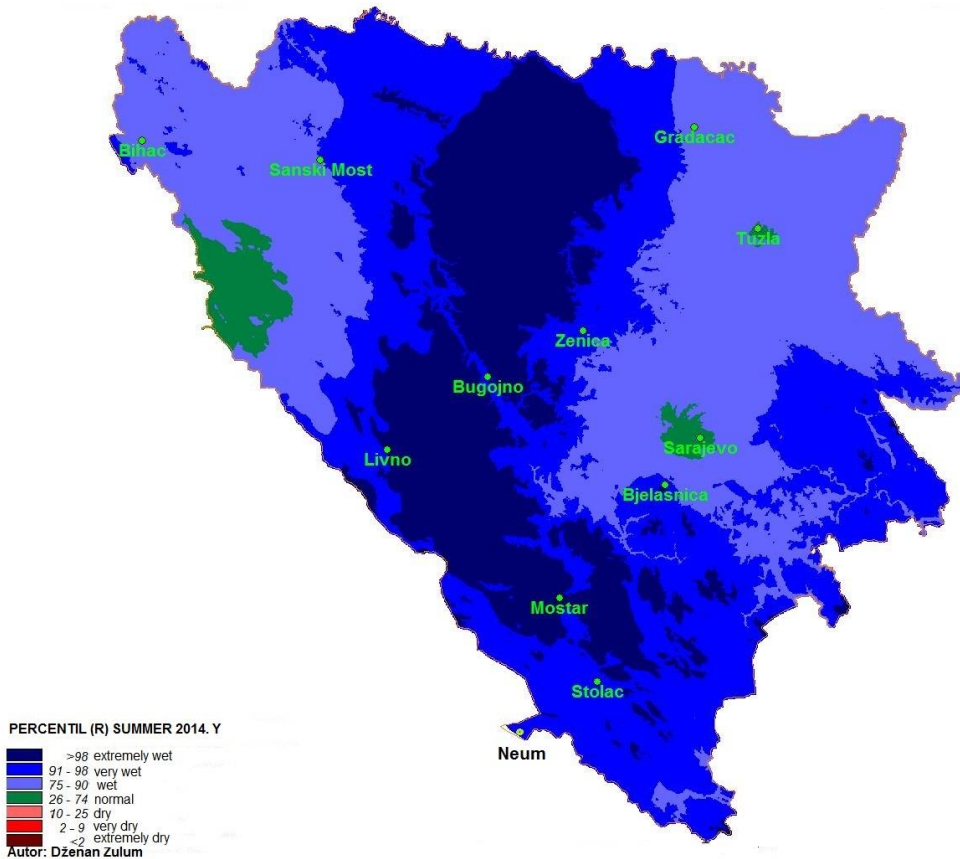
STATION	MONTH			STANICA	MMONTH		
	Juny	July	August		Juny	July	August
Bihać				Mostar			
Bjelašnica				Sarajevo			
Bugojno				Sanski Most			
Drvar				Stolac			
Gradačac				Tuzla			
Ivan Sedlo				Zenica			
Livno							

	extremely dry	very dry	dry	normal	wet	very wet	ekstremely wet
--	---------------	----------	-----	--------	-----	----------	----------------

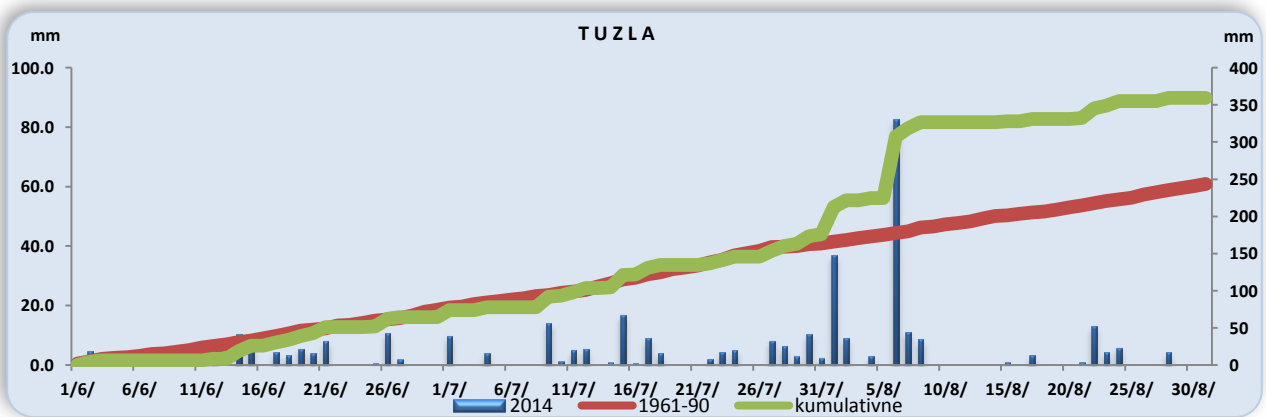
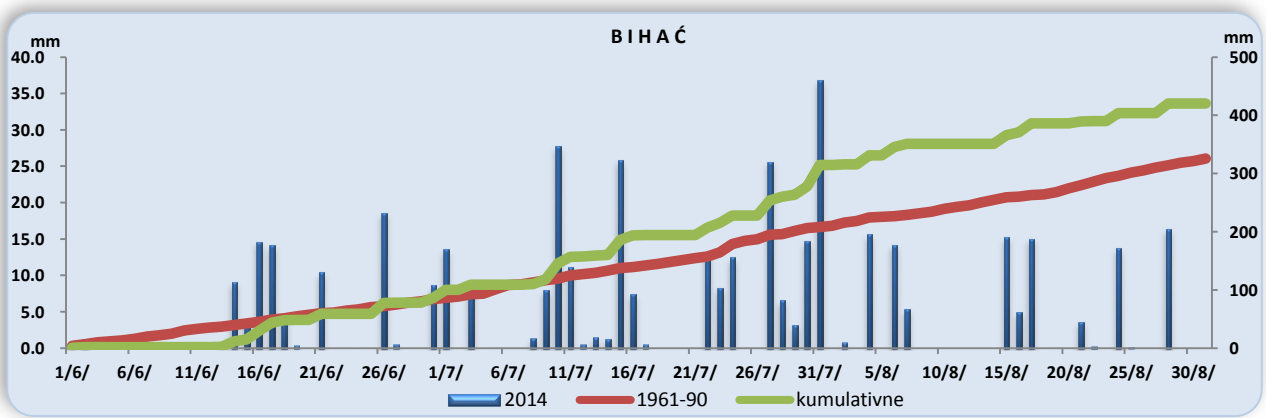
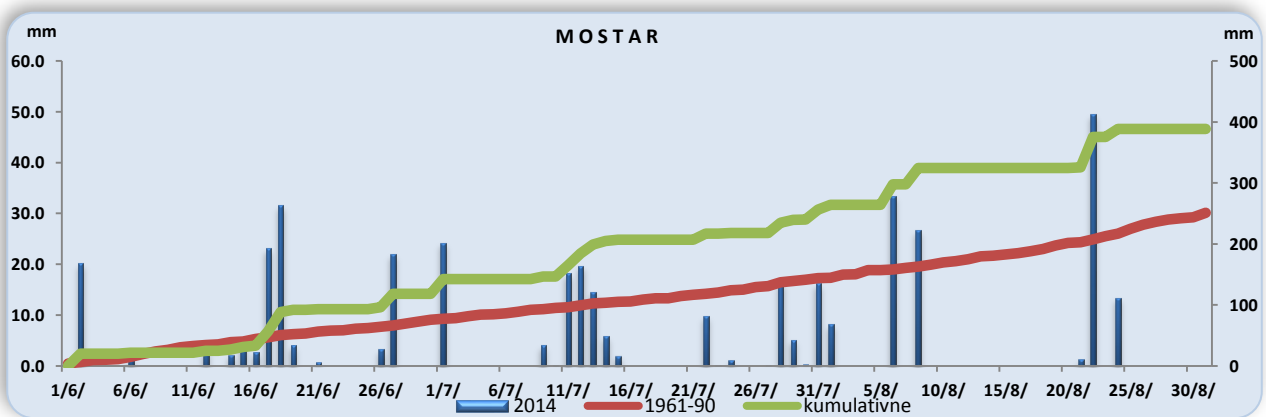
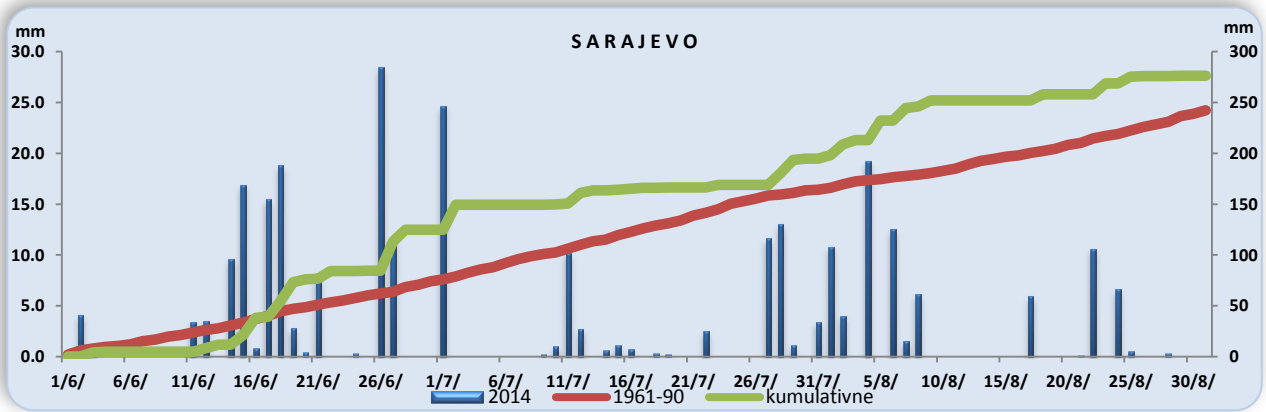
Table 6 Overview of marks on precipitation by month basis percentile



Map 3 Amount precipitation – summer 2014. year (l/m^2)



Map 4 Precipitation sums using percentile method during summer 2014 compared to the base period (1961 – 1990)



Graph 5-8 daily and cumulative rainfall in the summer of 2014