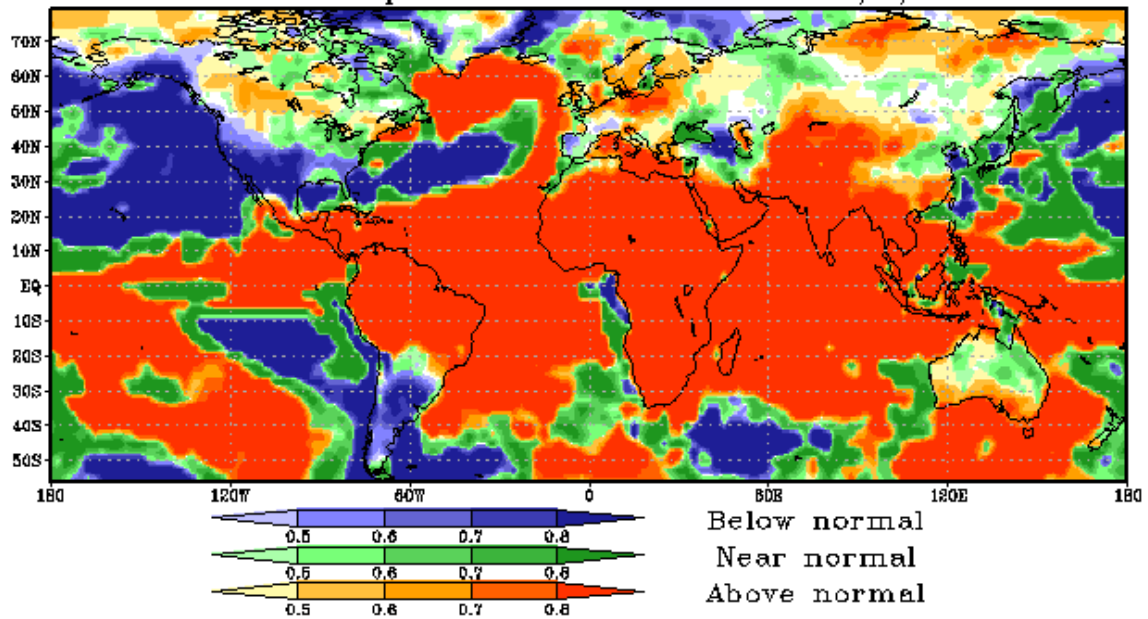
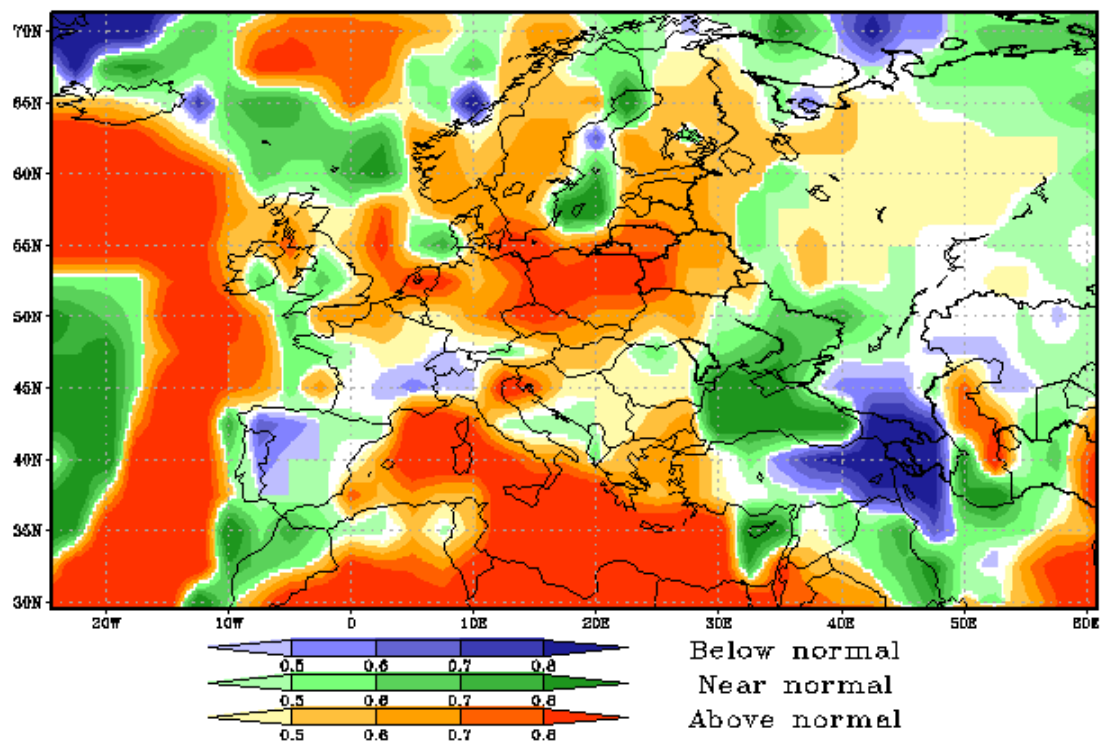


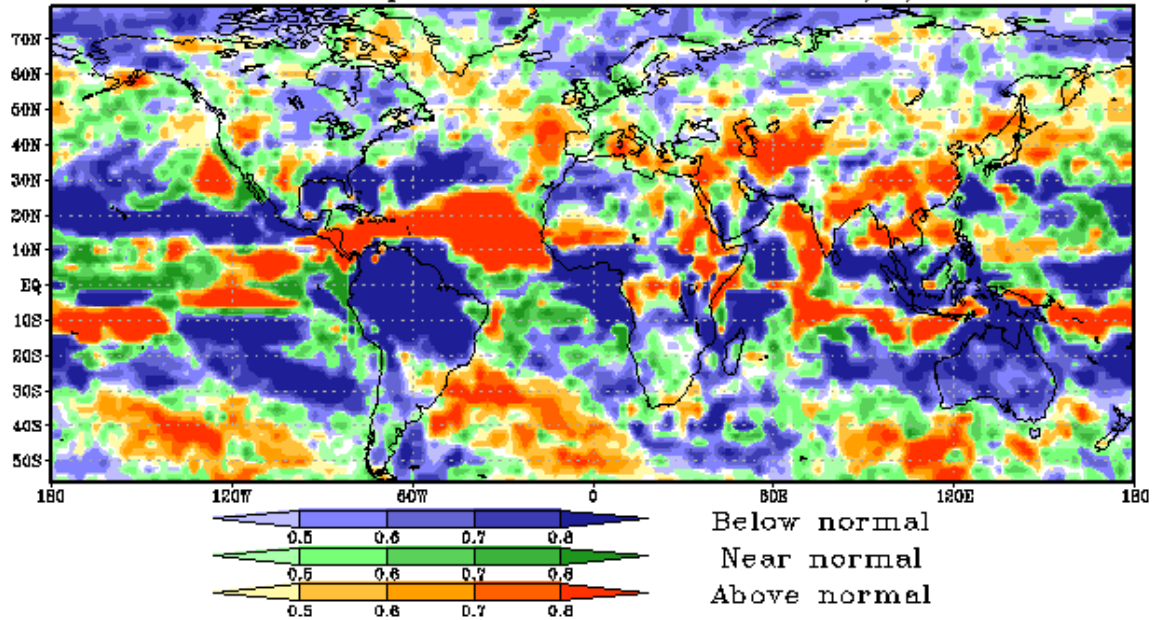
Composite probabilities of categorical forecast outcomes for
T2m seasonal anomalies. Producer: HMC
Forecast period: JJA 2010. Issued: 14/5/2010



Composite probabilities of categorical forecast outcomes for
T2m seasonal anomalies. Producer: HMC
Forecast period: JJA 2010. Issued: 14/5/2010



Composite probabilities of categorical forecast outcomes for
 for Precipitation seasonal anomalies. Producer: HMC
 Forecast period: JJA 2010. Issued: 14/5/2010



Composite probabilities of categorical forecast outcomes for
 for Precipitation seasonal anomalies. Producer: HMC
 Forecast period: JJA 2010. Issued: 14/5/2010

